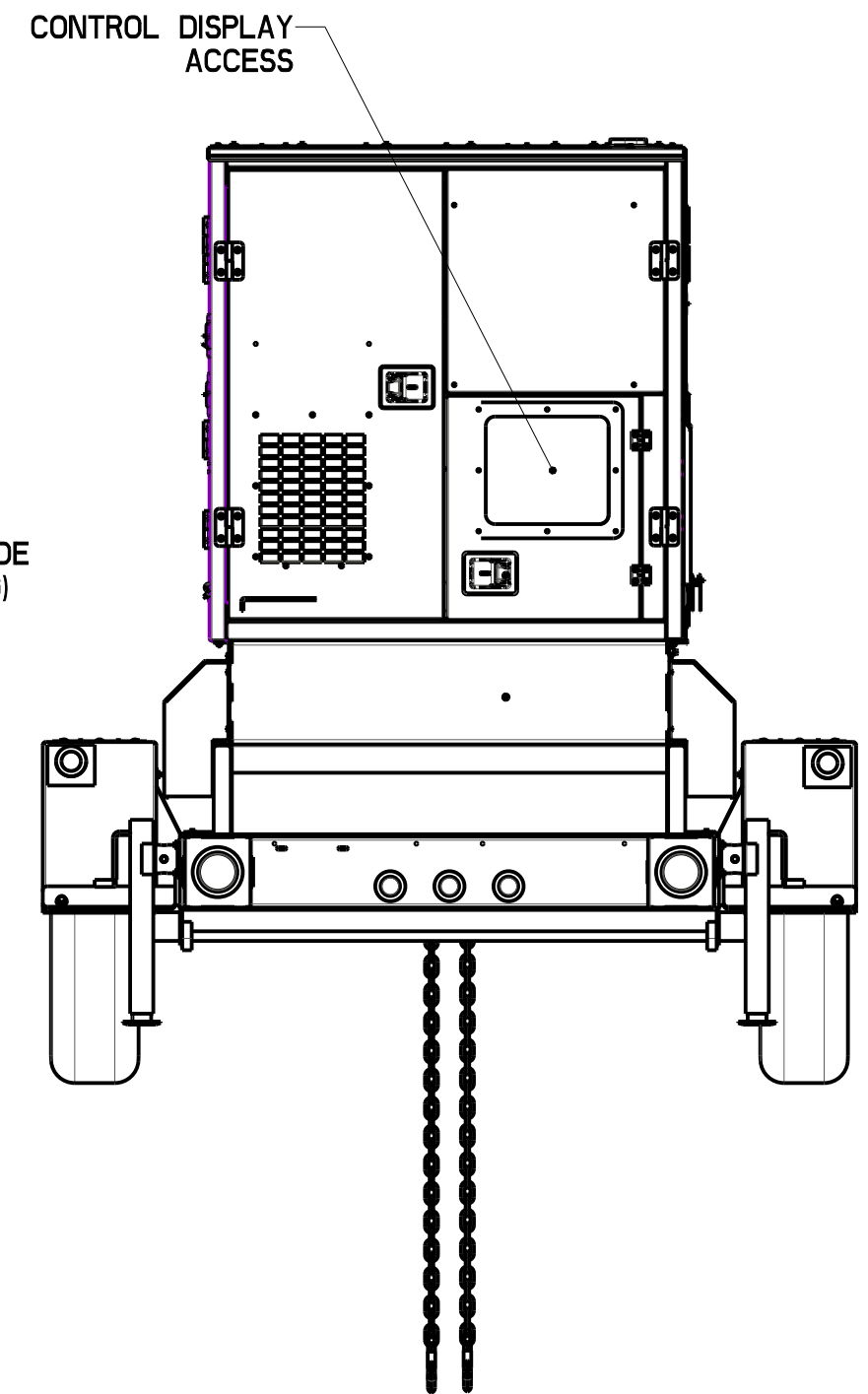
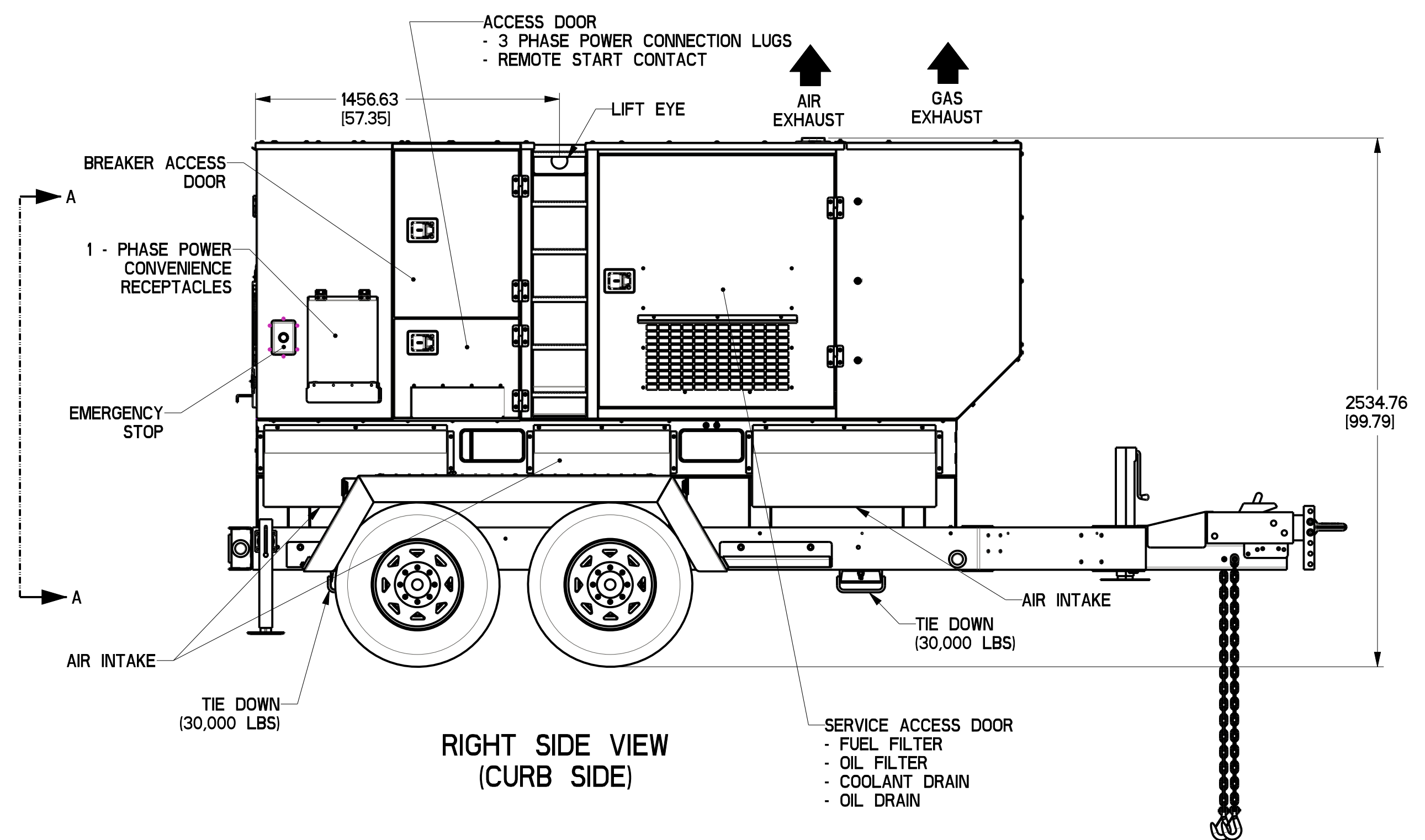
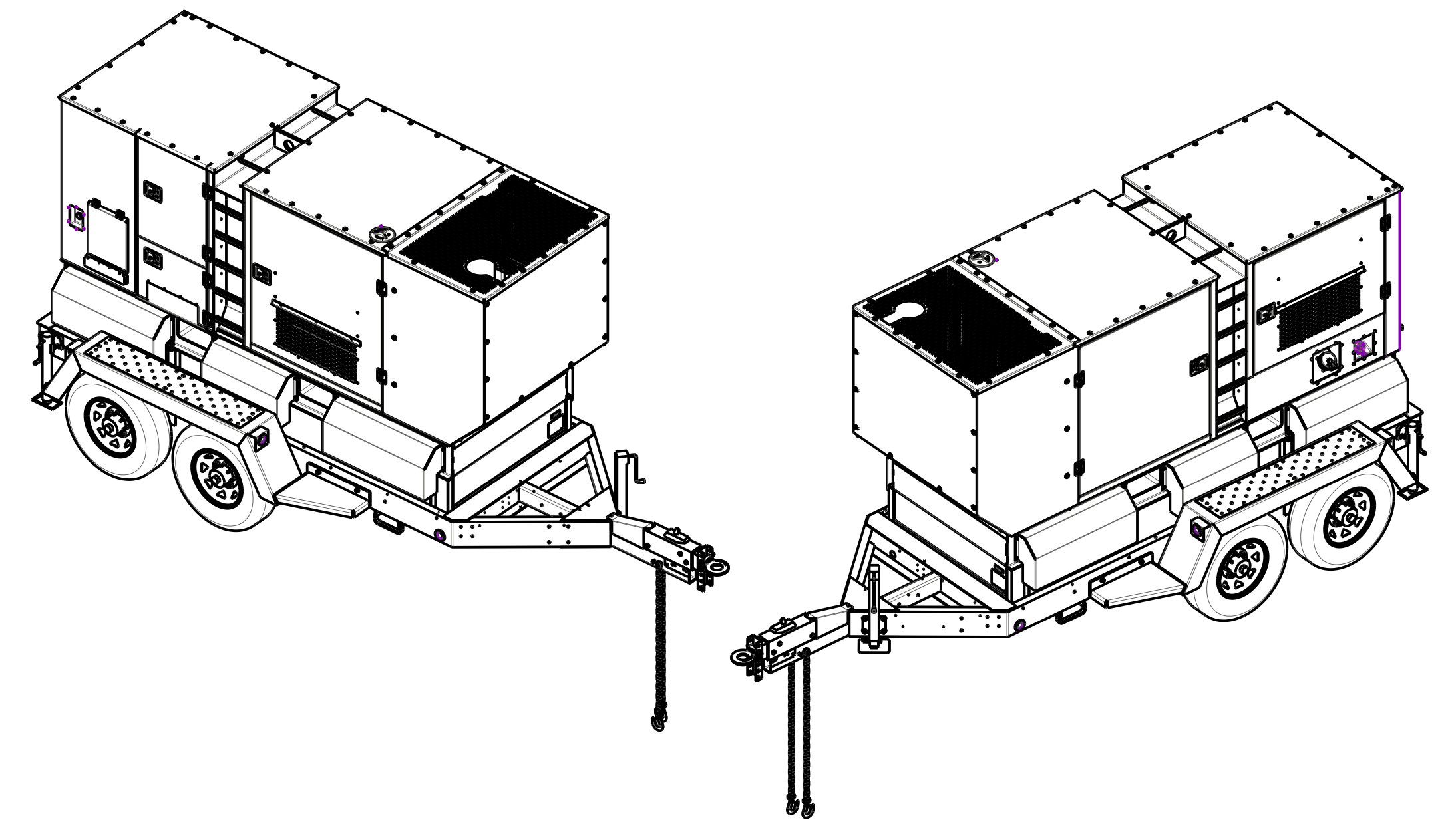


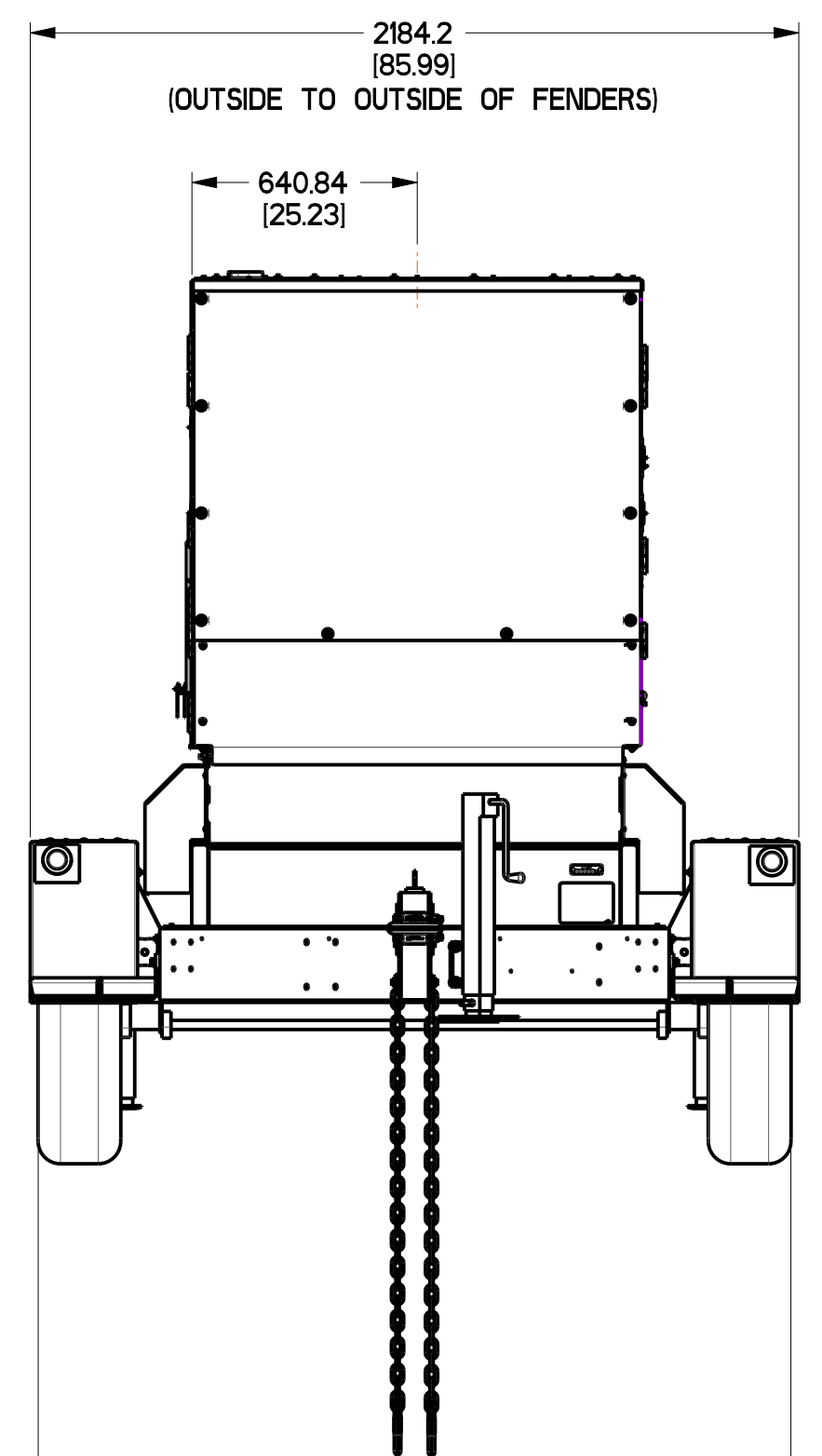
TOP VIEW



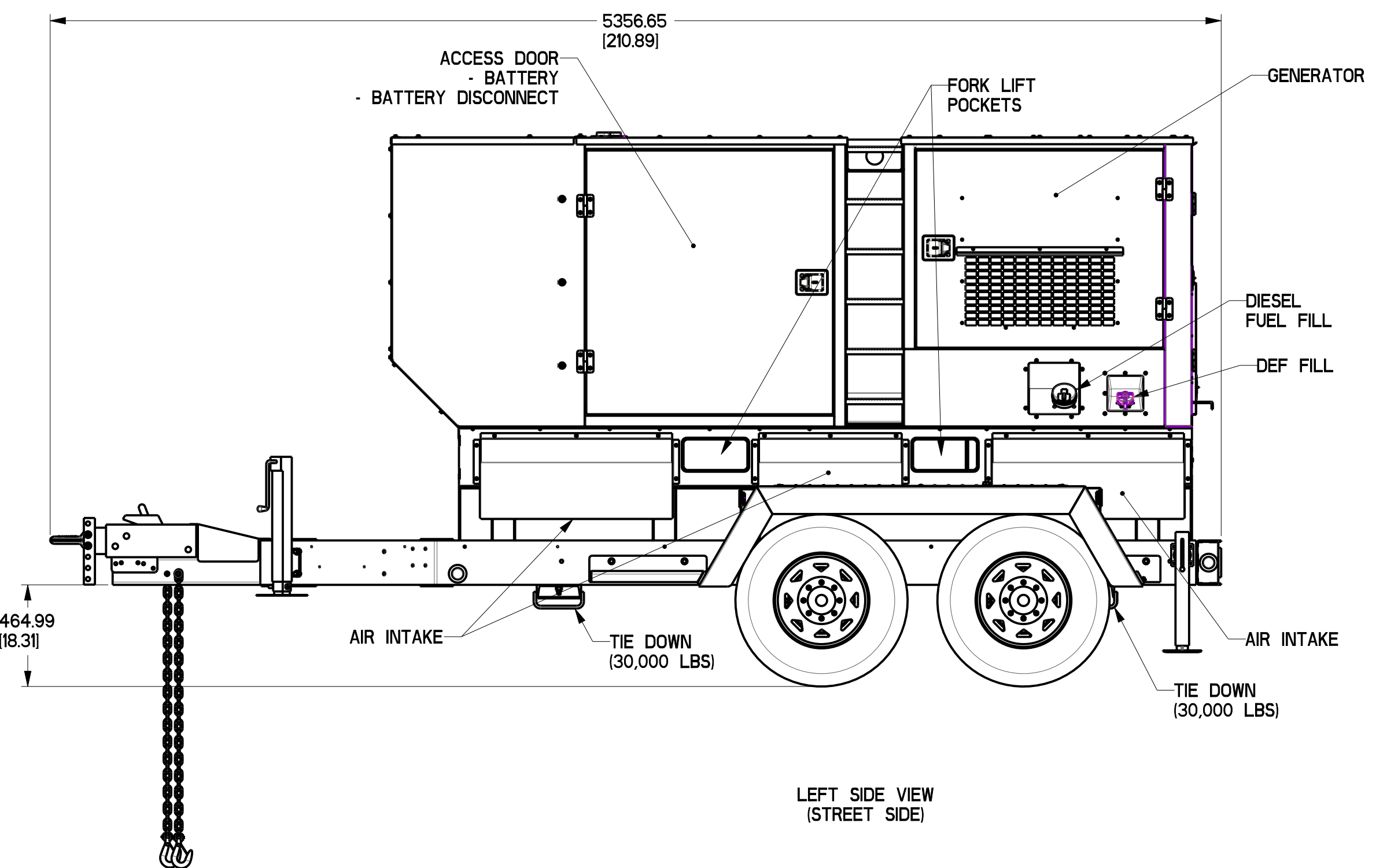
VIEW A-A (REAR VIEW)



RIGHT SIDE VIEW (CURB SIDE)



FRONT VIEW



LEFT SIDE VIEW (STREET SIDE)

MODEL (TRAILER)	FUEL TANK	WEIGHT	
		DRY	OPERATING
MDG150DF4	358 GAL	8,184 lb 3,712 kg	11,040 lb 5,007 kg
MDG175DF4	358 GAL	8,444 lb 3,830 kg	11,300 lb 5,125 kg
MDG250DF4	358 GAL	8,863 lb 4,020 kg	11,376 lb 5,160 kg

DRAWING CREATED FROM PRO/ENGINEER 3D FILE. ECO MODIFICATION TO BE APPLIED TO SOLID MODEL ONLY.

GENERAL TOLERANCES UNLESS NOTED
 ALL XX = ±.004"
 XXX = ±.004"
 XXXX = ±.002"
 ALL DIMS = ±.002"
 UNLESS SPECIFIED DIM AND TOL PER ASME Y14.5M-1994

THIRD ANGLE PROJECTION

GENERAC

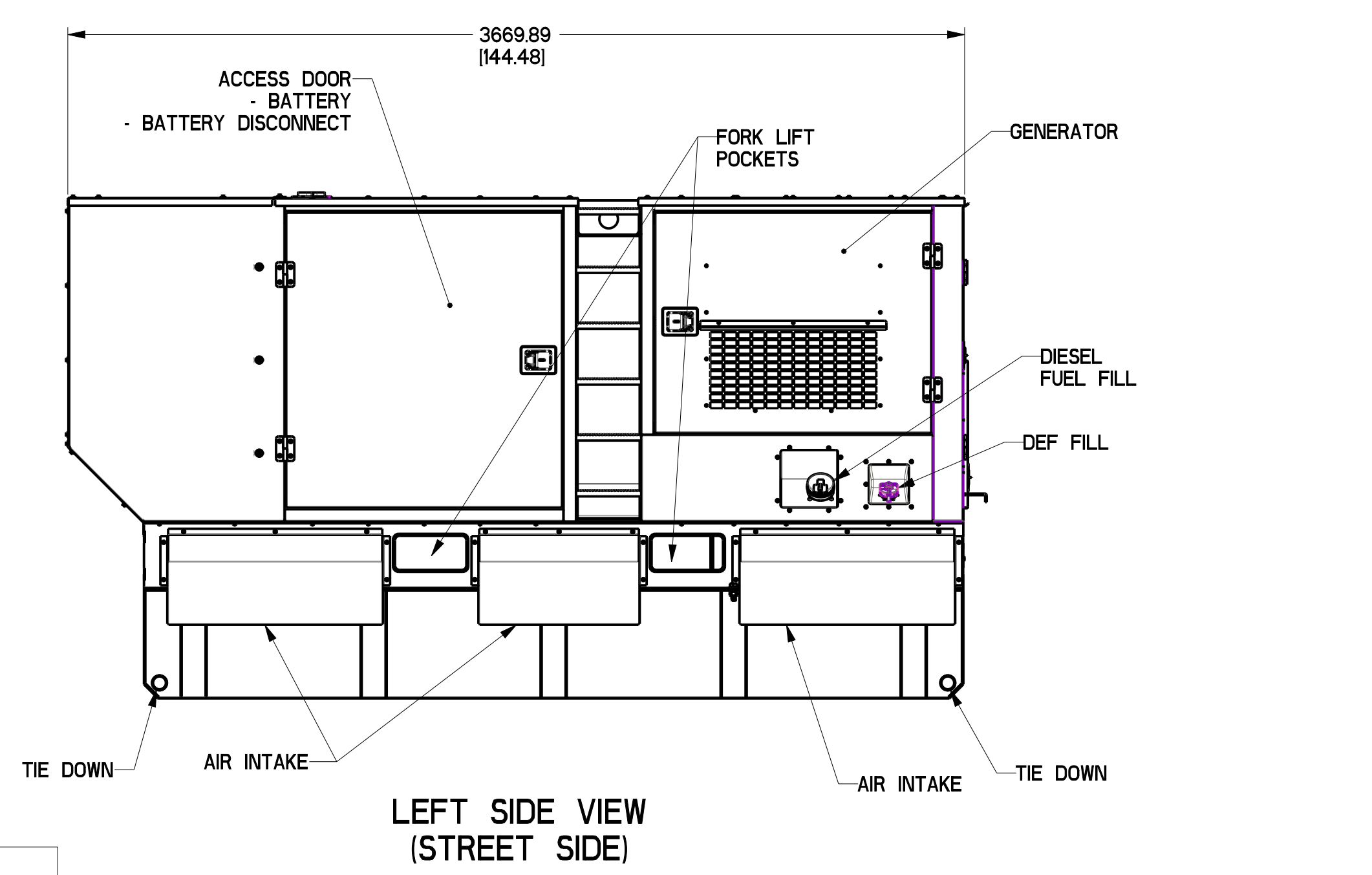
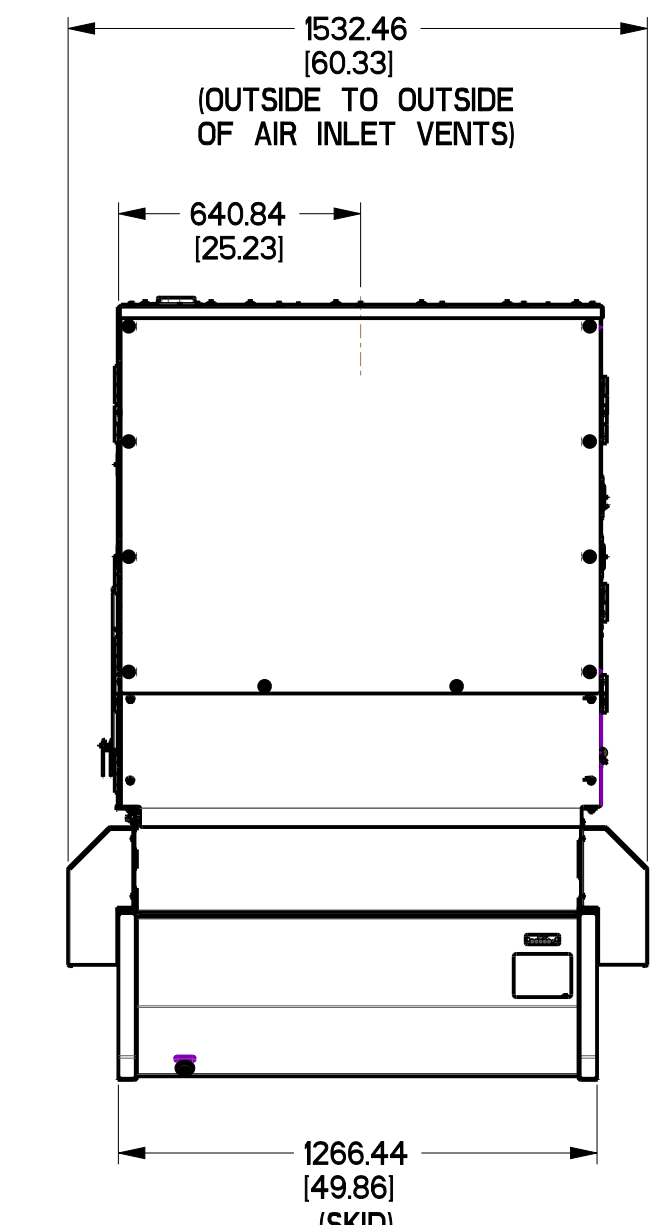
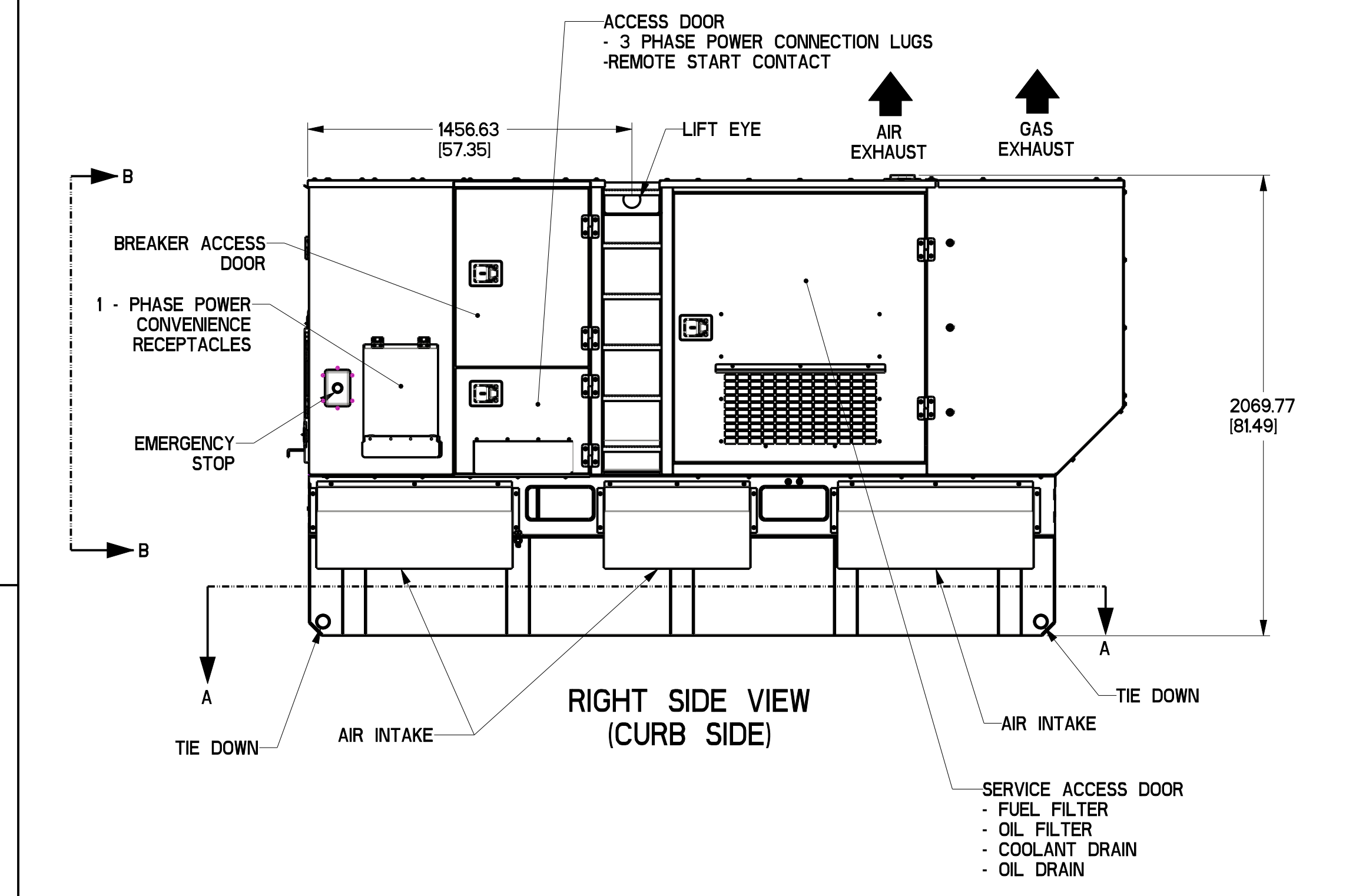
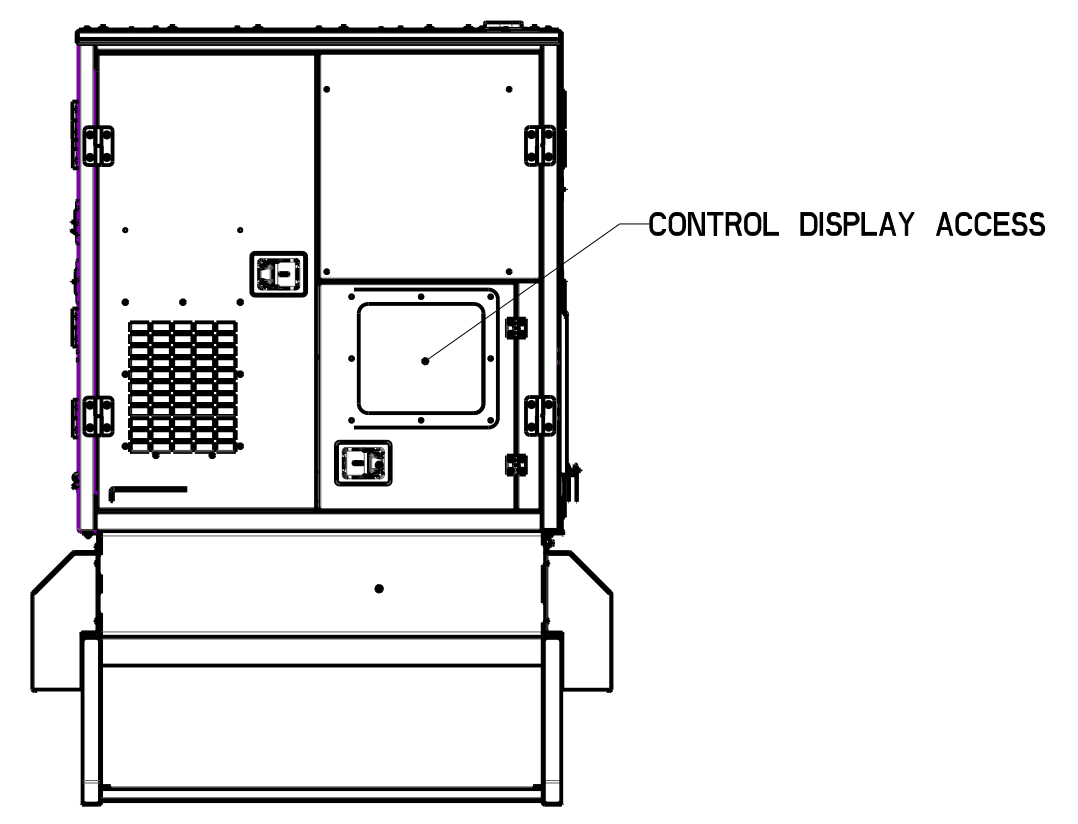
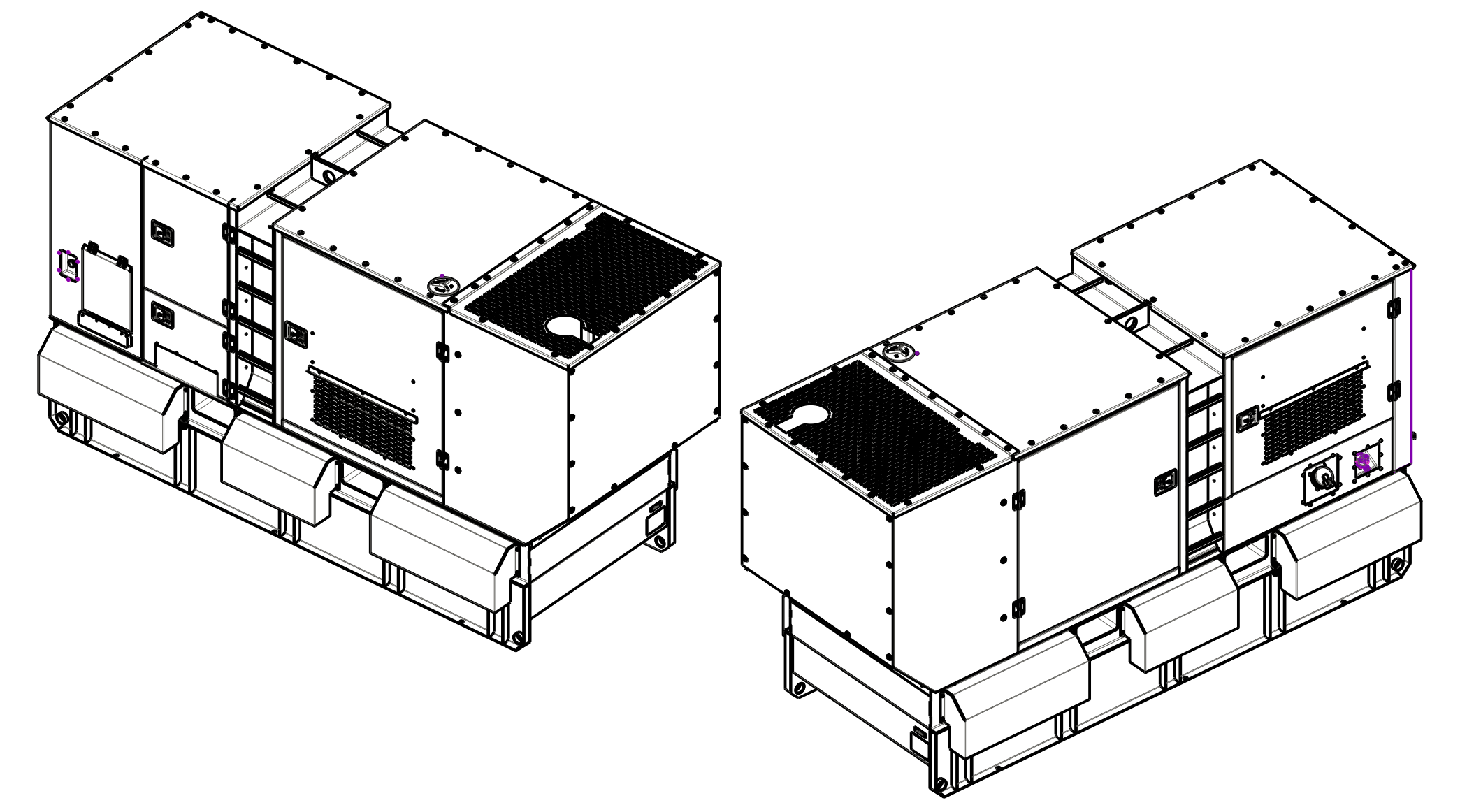
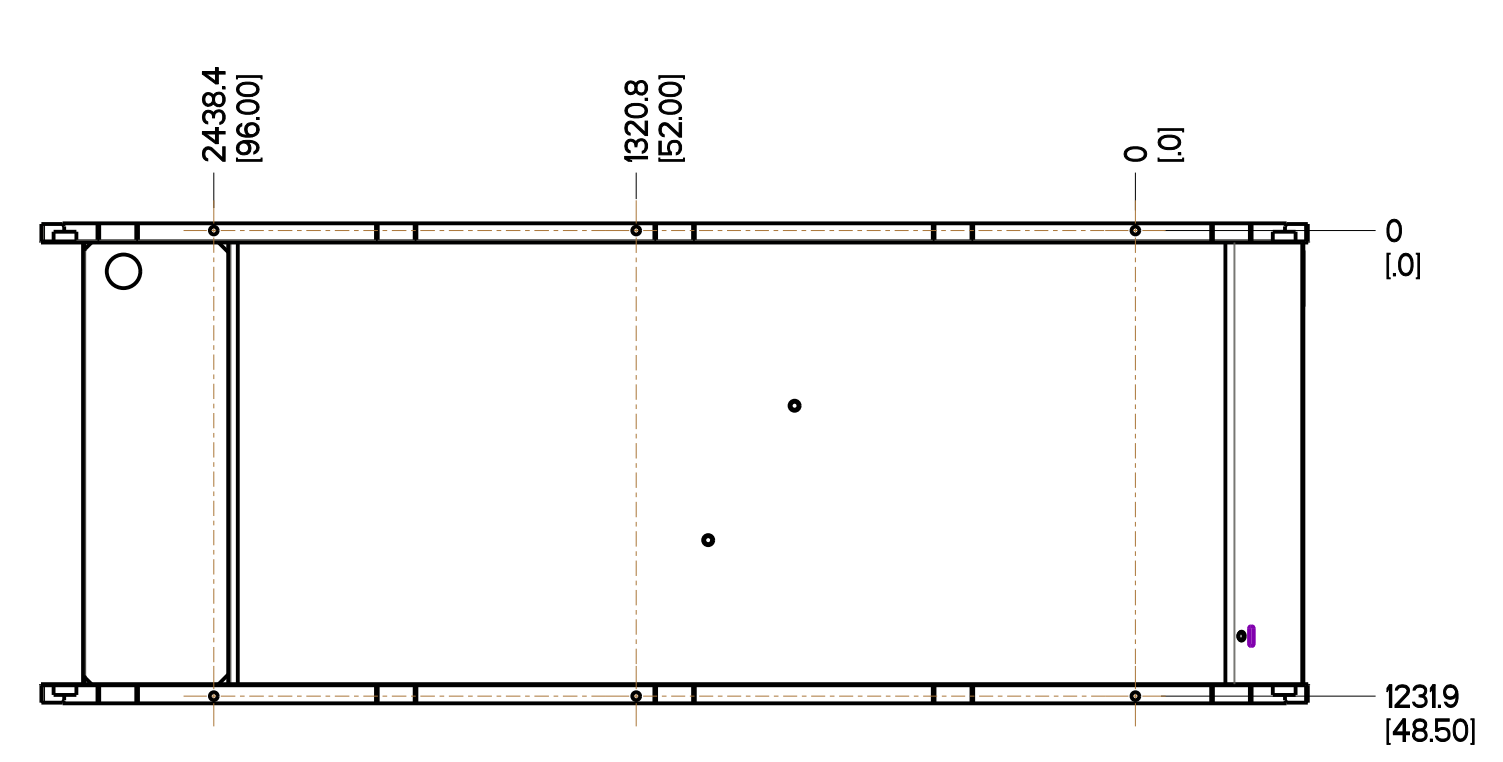
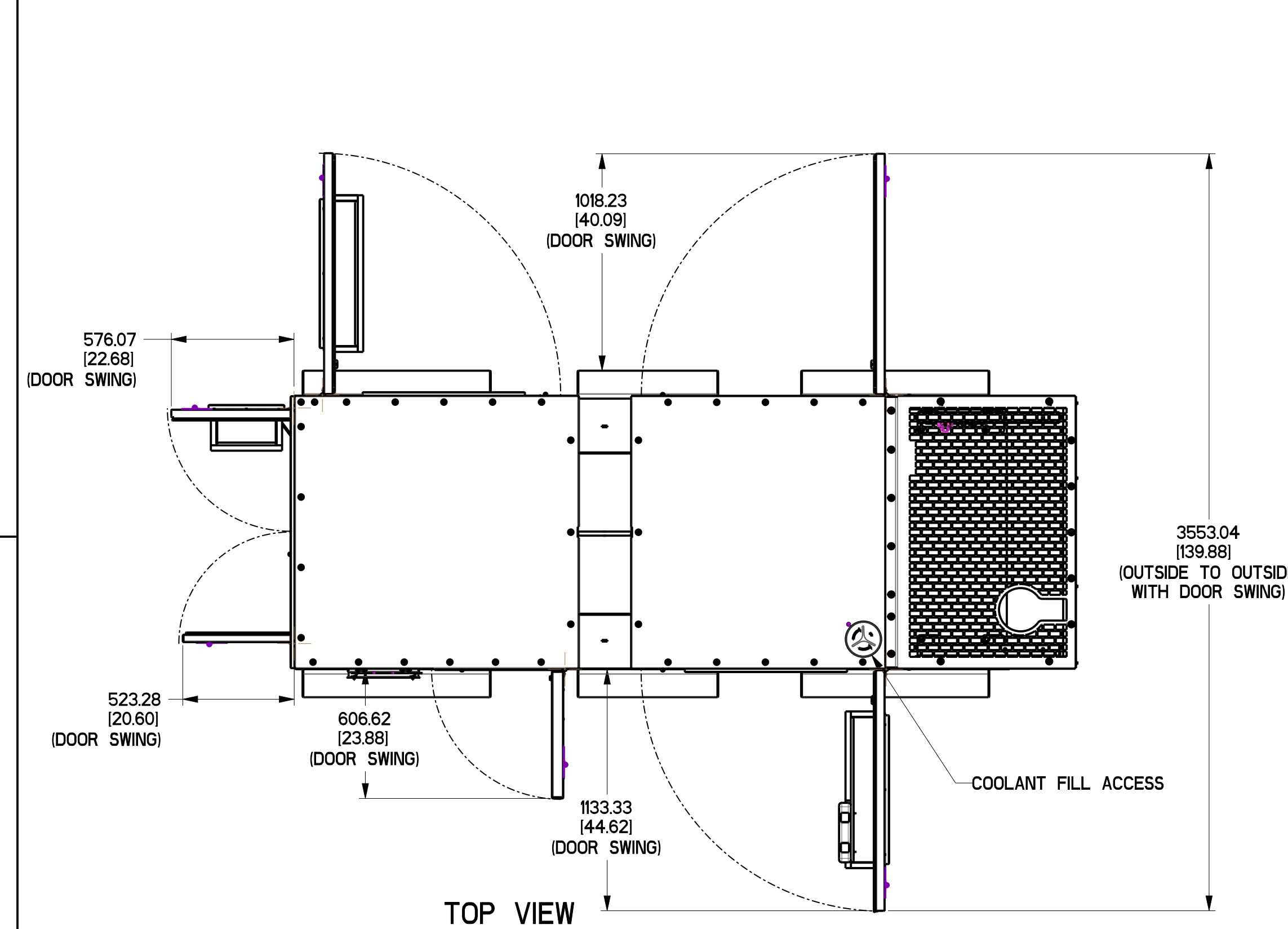
TITLE: MDG150/175/250DF4 (TRAILER)

MATERIAL	GENERAC MATL SPECIFICATION	SURFACE FINISH
N/A	N/A	N/A

SCALE: 0.050 WT-KG

REV 1

SHEET 1 of 2



MODEL (SKID)	FUEL TANK	WEIGHT	
		DRY	OPERATING
MDG150DF4	358 GAL	6,219 lb 2,820 kg	9,075 lb 4,116 kg
MDG175DF4	358 GAL	6,480 lb 2,939 kg	9,335 lb 4,234 kg
MDG250DF4	358 GAL	6,898 lb 3,129 kg	9,411 lb 4,269 kg

DRAWING CREATED FROM PRO/ENGINEER 3D FILE. ECO MODIFICATION TO BE APPLIED TO SOLID MODEL ONLY.

GENERAL TOLERANCES UNLESS NOTED

THIRD ANGLE PROJECTION

GENERAC

TITLE: **MDG150/175/250DF4 (SKID)**

MATERIAL: N/A

GENERAC MATL SPECIFICATION: N/A

PAIN'T SURFACE FINISH: N/A

APPROVALS: _____ DATE: 12/10/21

SCALE: 0.050 WT-KG

SIZE: D CAGE NO: N/A DWG NO: **A0001225306** REV: 1

LIFECYCLE STATE: Non-MPD Released

FIRST USE:

SHEET 2 of 2