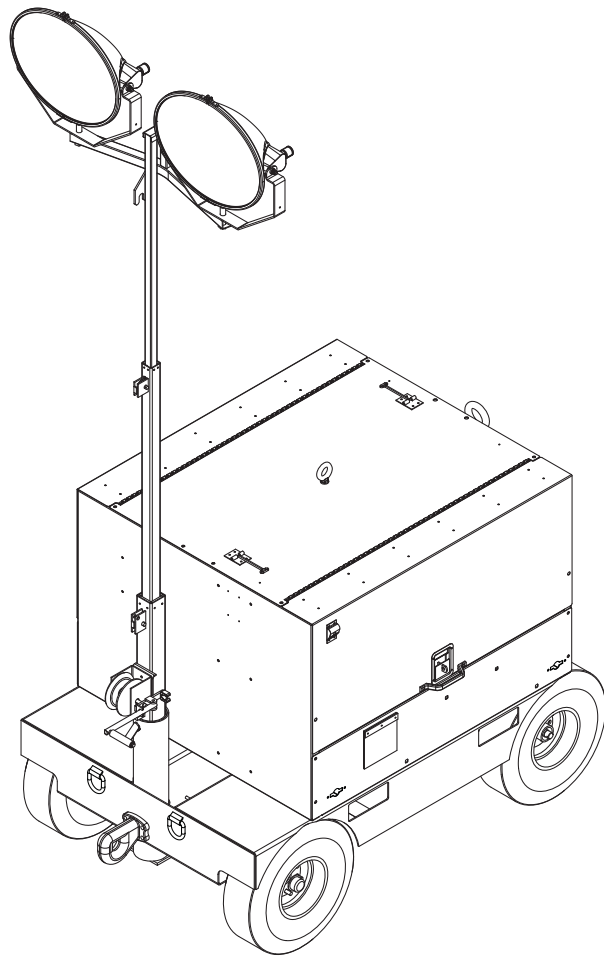




LIGHT CART  
MLC4064AF



PARTS MANUAL

## INTRODUCTION

Before servicing this machine, make sure the engine start switch is turned to off "O", the circuit breakers are open (off, "O"), and the negative (-) terminal on battery is disconnected. Attach a "DO NOT START" sign to the control panel. This will notify everyone that the unit is being serviced and will reduce the chance of someone inadvertently trying to start the unit.

### **▲ WARNING**

**Before operating or servicing this equipment, read and understand the Magnum Operating Manual which was included with the unit when shipped from the factory. Failure to do so increases the risk of injury to yourself or others.**

**MAGNUM PRODUCTS LLC**  
**215 Power Drive • Berlin, WI 54923**  
**U.S.A.**  
**Phone: 920-361-4442**  
**FAX: 920-361-4416**  
**Toll Free: 1-800-926-9768**  
**www.m-p-llc.com**

**For technical or parts QUESTIONS, please contact Magnum Products' Customer Support or Technical Support team at 920-361-4442 or toll free at 1-800-926-9768. Please have your serial number available.**

**To ORDER SERVICE PARTS, please contact the dealer from which you purchased the unit, or call Magnum Products to locate a dealer in your area.**

Engine Make: \_\_\_\_\_  
Engine Serial Number: \_\_\_\_\_  
Engine Model Number: \_\_\_\_\_  
Generator Make: \_\_\_\_\_  
Generator Model Number: \_\_\_\_\_  
Generator Serial Number: \_\_\_\_\_  
Unit Model Number: \_\_\_\_\_  
Unit Serial Number: \_\_\_\_\_

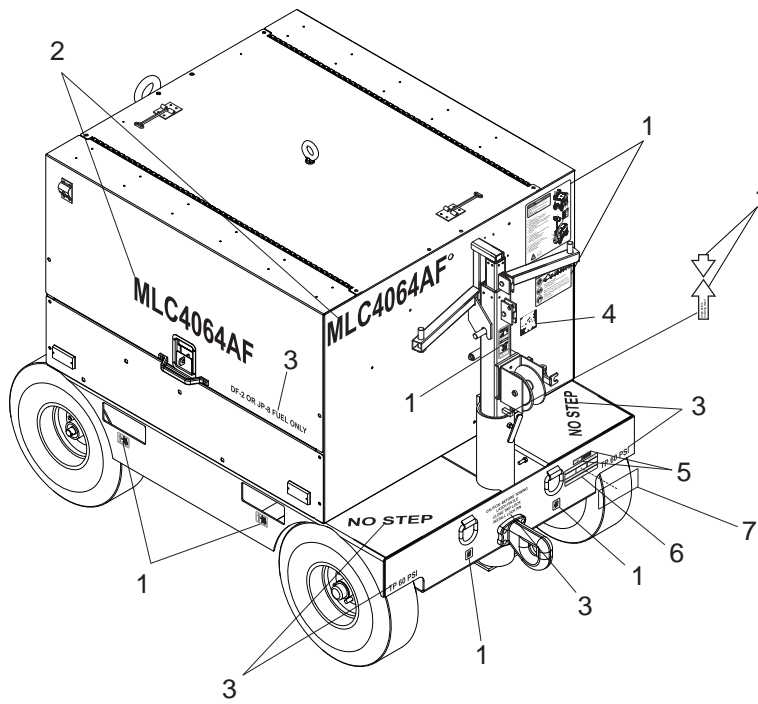
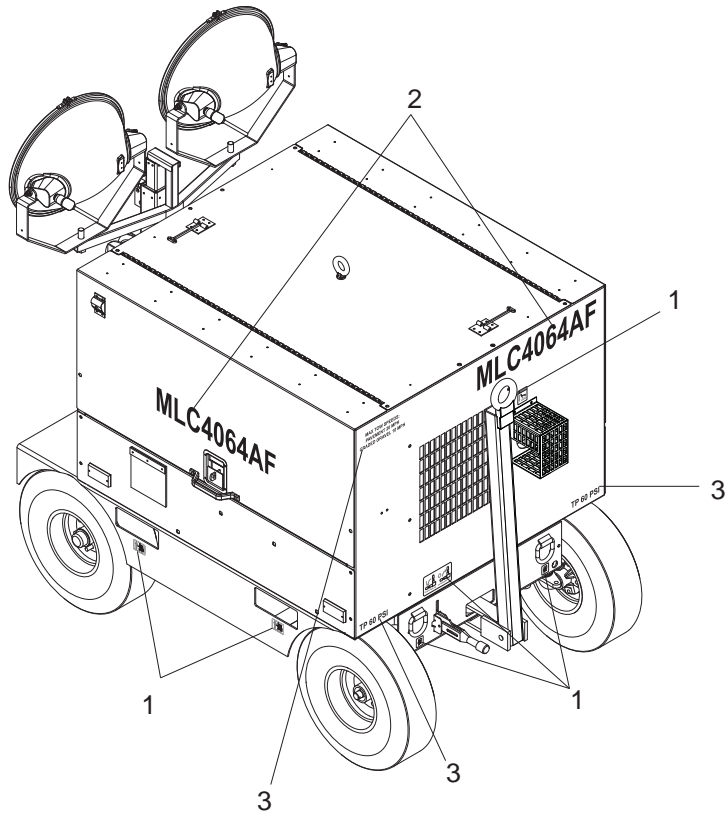
### **▲ WARNING**

**CALIFORNIA PROPOSITION 65 WARNING:**  
**Diesel engine exhaust and some of its constituents are known to the state of California to cause cancer, birth defects and other reproductive harm.**

# TABLE OF CONTENTS

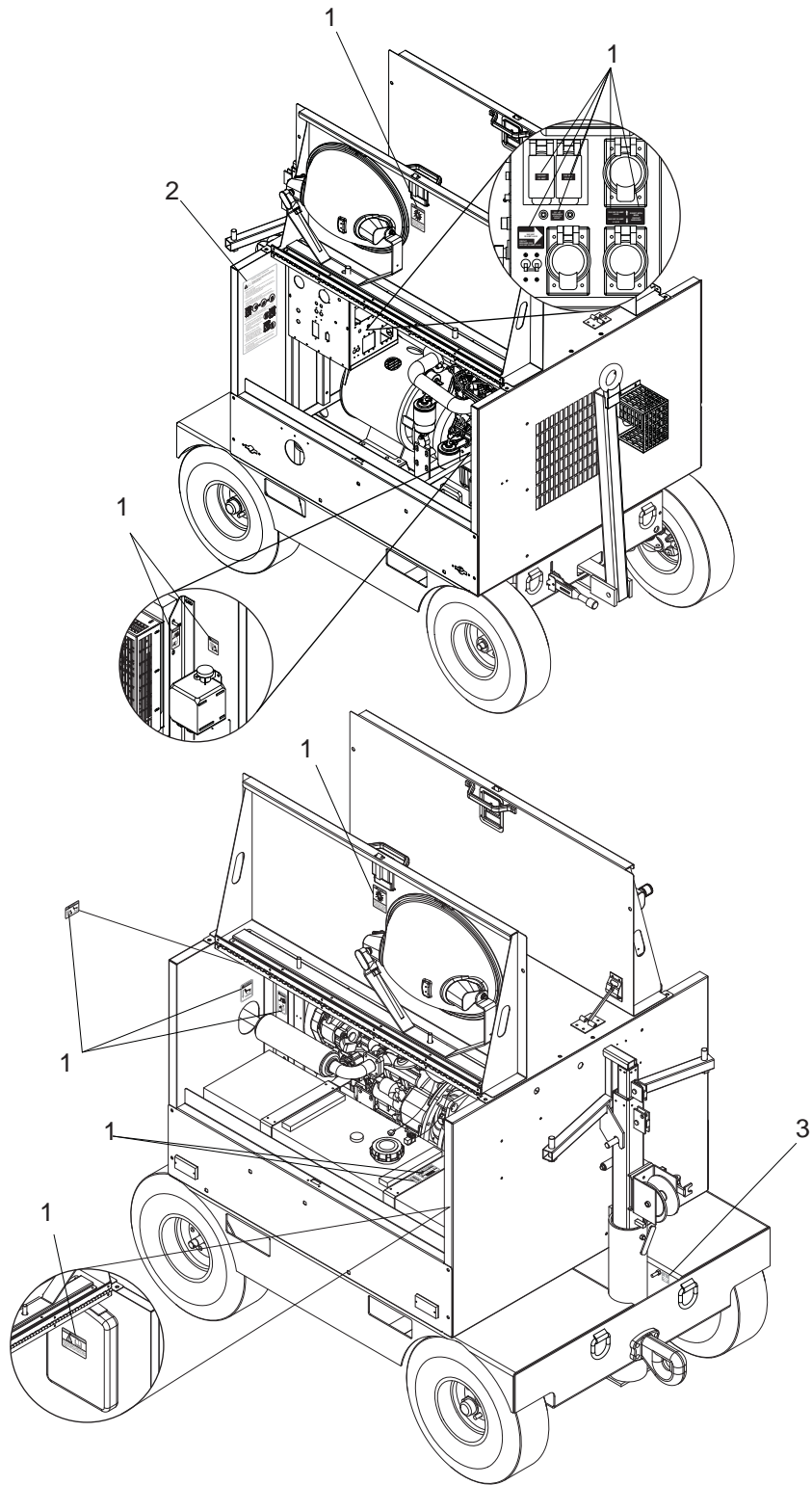
	Page
INTRODUCTION .....	2
TABLE OF CONTENTS .....	3
EXTERIOR DECALS .....	4 - 5
INTERIOR DECALS .....	6 - 7
MAST LIGHT ASSEMBLY .....	8 - 9
REAR PANEL ASSEMBLY .....	10 - 11
FRONT PANEL ASSEMBLY .....	12 - 13
SIDE PANEL ASSEMBLIES .....	14 - 15
DOOR PANEL ASSEMBLY .....	16 - 17
ROOF PANEL ASSEMBLY .....	18 - 19
CONTROL PANEL ASSEMBLY .....	20 - 21
CONTROL BOX ASSEMBLY .....	22 - 23
MAST ASSEMBLY .....	24 - 25
FRAME ASSEMBLY .....	26 - 27
AXLE ASSEMBLY .....	28 - 29
FRONT SPINDLE ASSEMBLY .....	30 - 31
CHASSIS ASSEMBLY .....	32 - 33
COOLING SYSTEM ASSEMBLY .....	34 - 35
FUEL TANK AND FILTER ASSEMBLY .....	36 - 37
ENGINE ASSEMBLY .....	38 - 39
GENERATOR ASSEMBLY .....	40 - 41
NOTES .....	42
SERVICE LOG .....	43

# EXTERIOR DECALS



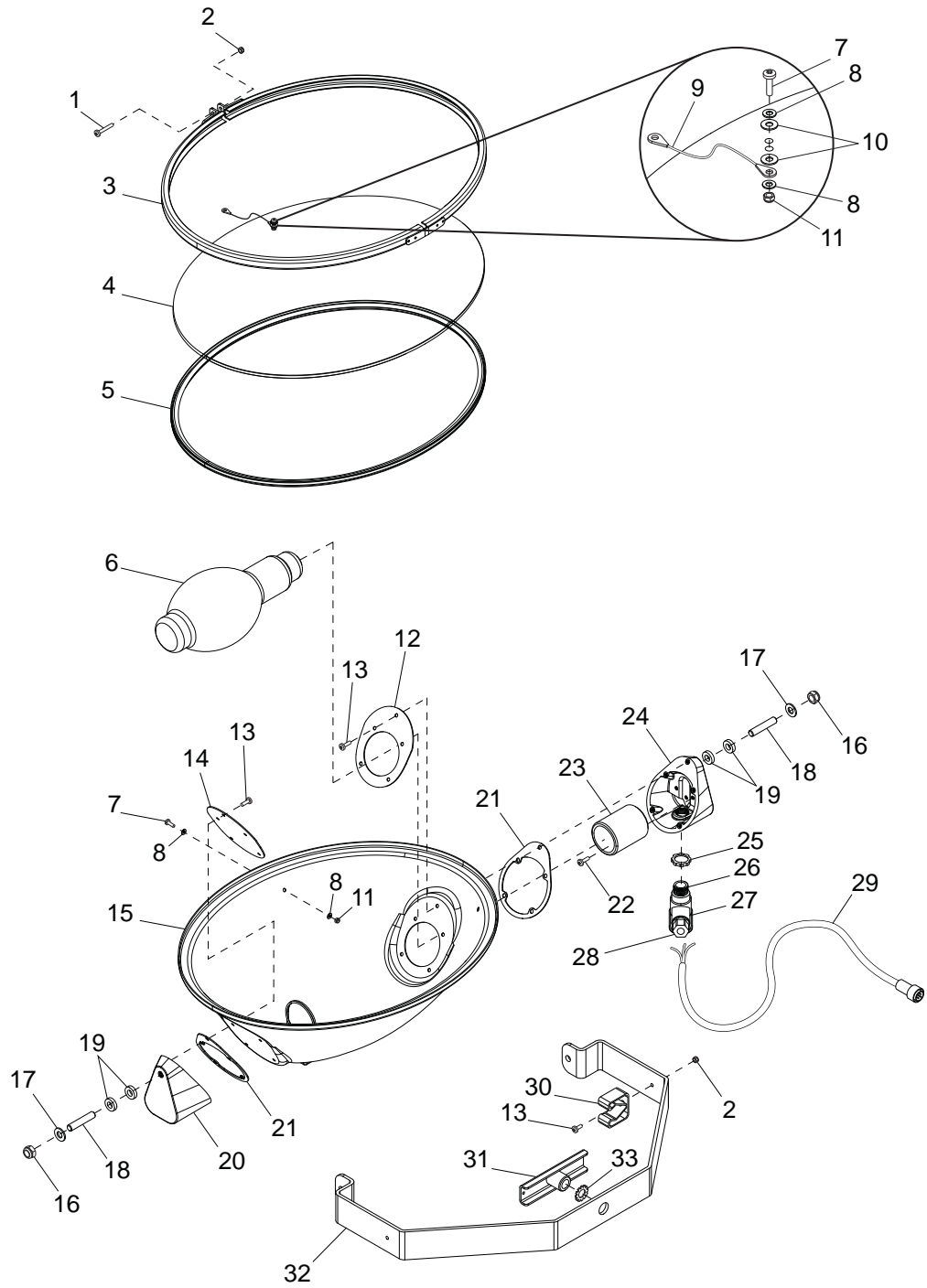
<b>ITEM</b>	<b>PART</b>	<b>QTY</b>	<b>DESCRIPTION</b>	<b>NOTES</b>
1	42050	1	DECAL SET, Safety/ops MLC4064AF	
2	42052	1	DECAL, Number - MLC4064AF	
3	42051	1	DECAL, No step/tire pressure MLC4064AF	
4	13582	1	DATA PLATE, Transportation - MLC4064AF	
5	90082	1	LABEL, Stock - 2.50 x 7.00 Set	
6	50290	1	LABEL, Laser - for VIN Tag	
7	50291	1	OVERLAY, Clear UV	

# INTERIOR DECALS



<b>ITEM</b>	<b>PART</b>	<b>QTY</b>	<b>DESCRIPTION</b>	<b>NOTES</b>
1	42050	1	DECAL SET, MLC4064AF Safety/Ops	
2	10673	1	DECAL, Control Panel Ops - MLC4064AF	
3	12142	2	DECAL, Ground	

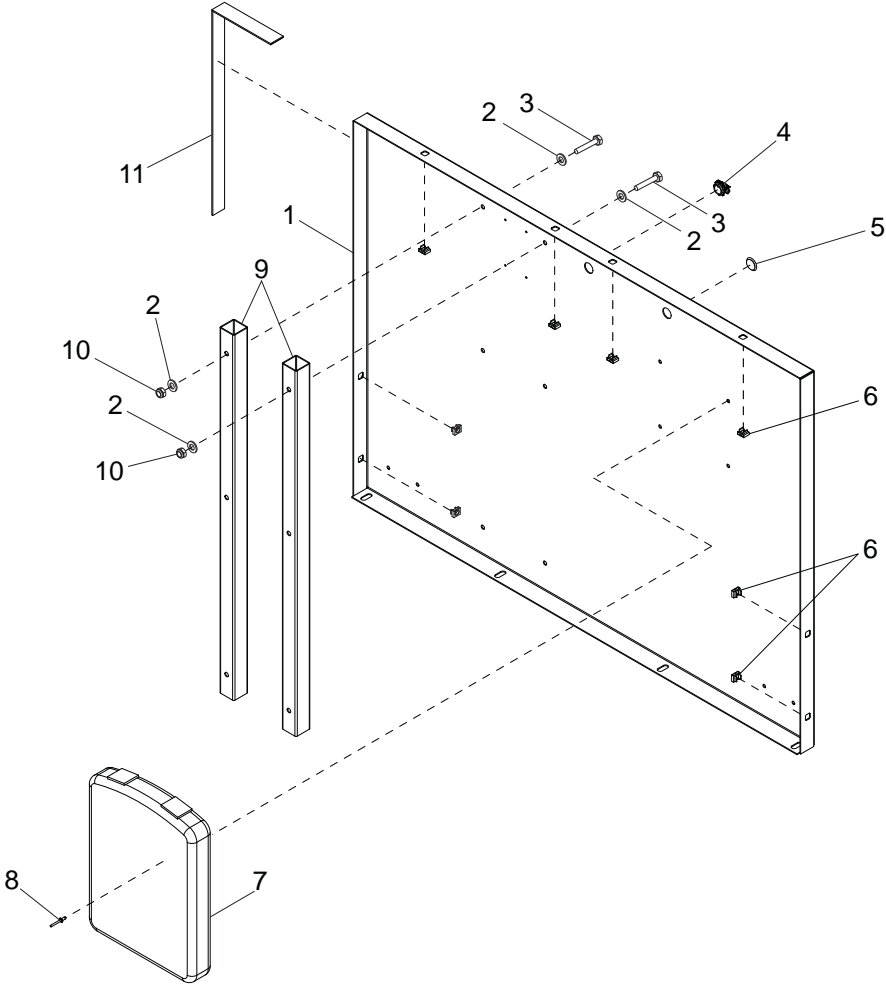
# MAST LIGHT ASSEMBLY





ITEM	PART	QTY	DESCRIPTION	NOTES
1	60304	1	SCREW, M5-.080X25 Pan HD Phillips	
2	60447	2	NUT, M5 Nylk SS	
3	13367	1	ASSEMBLY, Aluminum Ring Oval	
4	13369	1	LENS, Glass Oval	
5	13373	1	GASKET, Lens Oval	
6	11391	1	BULB, 1000W MH, Short Length	
7	13399	2	SCREW, M4X18 Phil	
8	60067	4	WASHER, #10, Flat SS	
9	13370	2	ASSEMBLY, Tether Oval Light	
10	13372	2	WASHER, #4 Nylon	
11	60051	2	NUT, Nylk M4 Grd 8	
12	13376	1	BRACKET, Socket End Plate	
13	13388	11	SCREW, M5X12 Slotted Hex Flng	
14	13377	1	BRACKET, Non-Socket End Plate	
15	13366	1	HOUSING ASSEMBLY, Oval Light	
16	60307	2	NUT, Nylk .500-13 Grd 5	
17	60309	2	WASHER, Flat .500	
18	13392	2	STUD, Trunnion Mounting Oval Light	
19	13390	4	WASHER, Nylon Oval Light	For P# 13392
20	13374	1	SUPPORT, Housing/Trunnion	
21	13378	2	GASKET, Silicone Oval Light	For P# 13376 & 13377
22	13393	2	SCREW, M5X12 Phil	
23	13381	1	SOCKET, Bulb - E9 Oval Light	
24	13375	1	SUPPORT, Housing / Trunnion	
25	15861	1	NUT, .500 NPT Special Lock	
26	13386	1	FITTING, Nipple .500 Oval Light	
27	13387	1	CONNECTOR, Weather Tight	
28	15864	1	STRAIN RELIEF, .50 NPT Weathertight	
29	13383	1	CORD, Power Quick Disc. Oval	
30	19041	1	CLIP, Spring Holder	
31	13403	1	HANDLE, T	Wingnut
32	13368	1	TRUNNION, Oval Light	
33	61174	1	WASHER, .750 Ext. Star ZC	

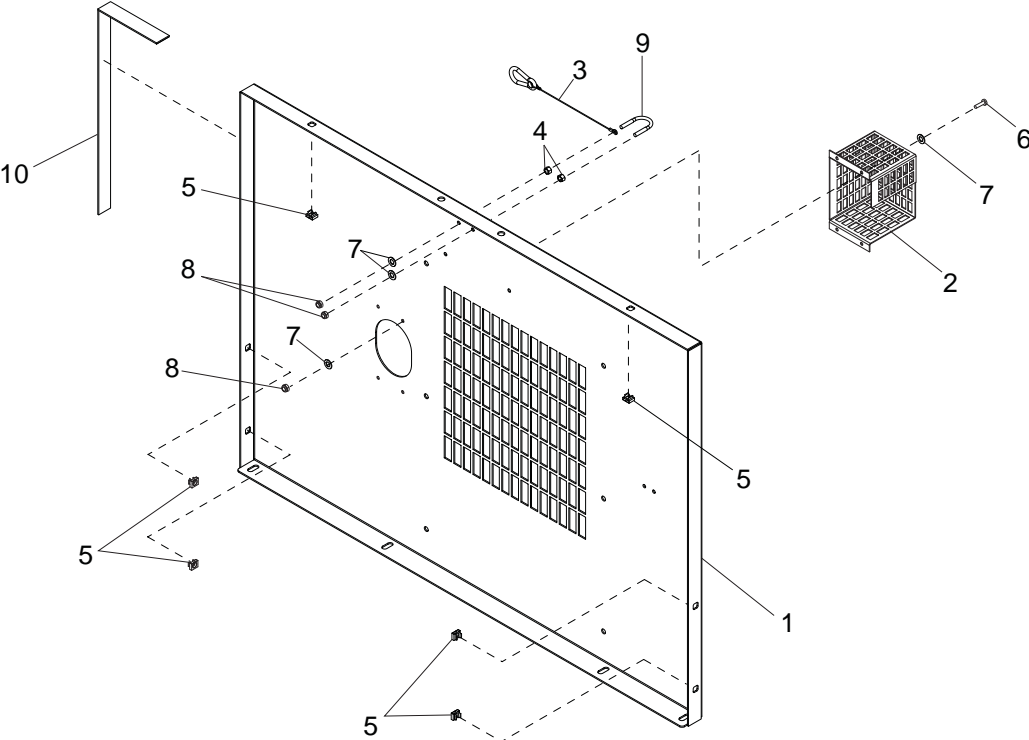
# REAR PANEL ASSEMBLY



ITEM	PART	QTY	DESCRIPTION	NOTES
1	13273AF*	1	PANEL, End - Control Box (Rear)	
2	60340	12	WASHER, Flat .312 SS	
3	60782	6	SCREW, Hex .312-18X.2.50 SS	
4	65490	1	STRAIN RELIEF, 1.00 Romex W/Nut	
5	60861	1	PLUG, (Hole) Black -.875	
6	60657	6	NUT, Cage .375-16 For 12 Ga.	
7	24540	1	HOLDER, Manual Plastic	
8	60423	2	RIVET .188X.250	
9	13309B	2	TUBE, Control Box Spacer	
10	60303	2	NUT, .312-18 Nylk Grd 5	
11	50197	2	WEATHER STRIPPING, .06X1.00X30"	

\* AF = Gray  
 AFG = Green  
 AFT = Tan

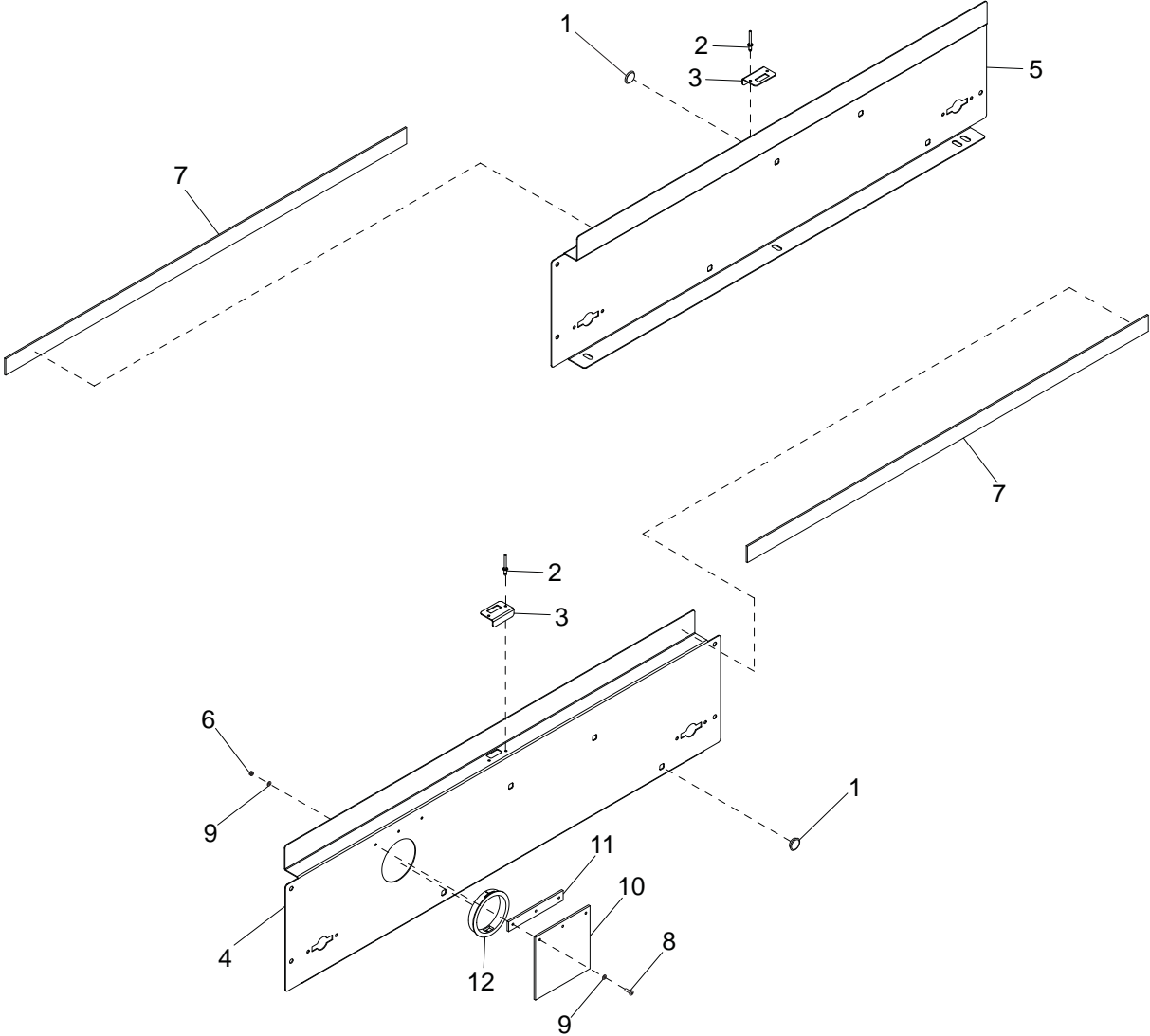
FRONT PANEL ASSEMBLY



ITEM	PART	QTY	DESCRIPTION	NOTES
1	13480AF*	1	PANEL, End - Radiator (Front)	
2	13842AF*	1	GUARD, Tail pipe - Stainless Steel	
3	13925	1	CABLE TETHER Assy, .06 Cable/.312 Spring Hook 11 In	
4	60538	2	NUT, .250 Hex 18-8 SS	
5	60657	6	NUT, Cage .375-16 For 14 GA	
6	60620	4	SCREW, .250-20X1.00 Std Hex 18-8 SS	
7	60696	10	WASHER, .250 Flat .625/.050 18-8 SS	
8	60787	6	NUT, .250-20 Nylk 18-8 SS	
9	60509	1	BOLT, U - .250-20X1.375X3.438 ZP	
10	50197	2	WEATHER STRIPPING, .06x1.00x30"	

\* AF = Gray  
 AFG = Green  
 AFT = Tan

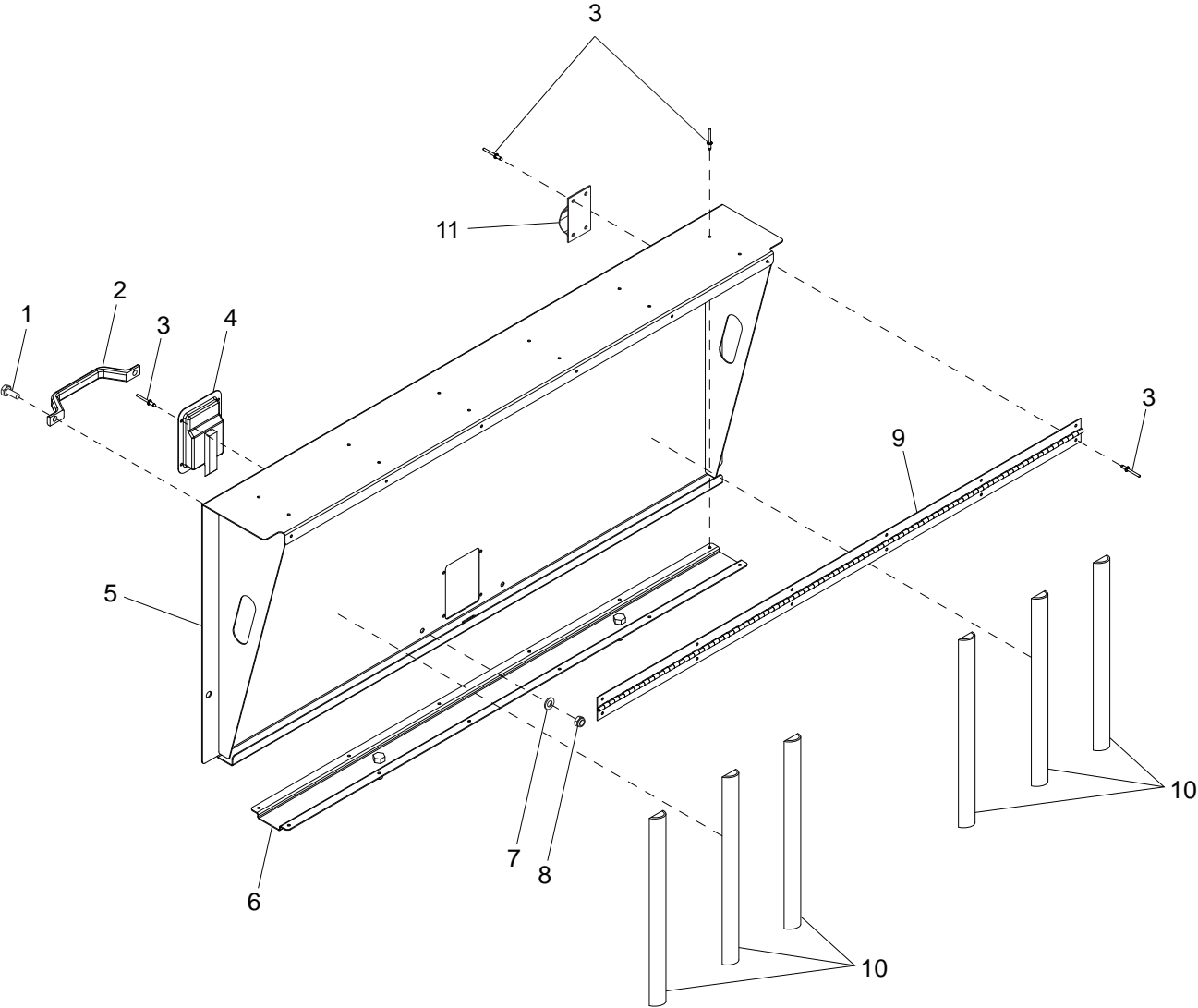
**SIDE PANEL ASSEMBLIES**



ITEM	PART	QTY	DESCRIPTION	NOTES
1	60861	4	PLUG, Hole (Black)	
2	60268	4	RIVET, .188 dia. X .126 to .250 grip	
3	13291	2	STRIKER, Plate	
4	13277AF*	1	PANEL, Side - Left Hand	
5	13276AF*	1	PANEL, Side - Right Hand	
6	60061	3	NUT, 10-32 Nik Grd 5	
7	50197	2	WEATHER-STRIPPING, .06X1.00x48"	
8	60540	3	SCREW, Pan Phil 10-32X.750 SS	
9	60237	3	WASHER, Flat #10	
10	15692	1	RUBBER Door	
11	15531B	1	CLAMP, Neoprene	
12	19578	1	FITTING, Bushing 4.00ODX3.437ID	

\* AF = Gray  
 AFG = Green  
 AFT = Tan

DOOR PANEL ASSEMBLY

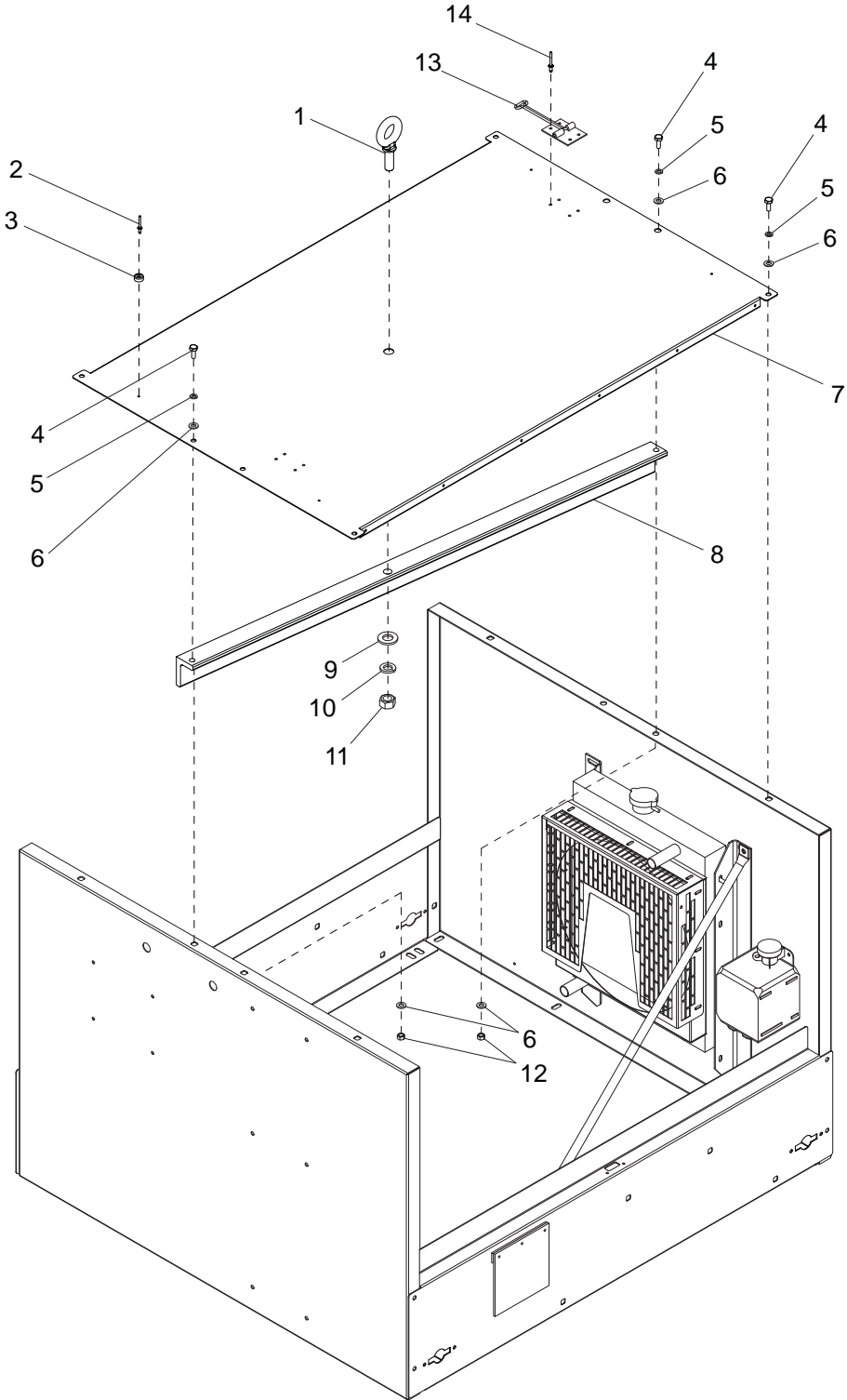




ITEM	PART	QTY	DESCRIPTION	NOTES
1	60550	2	SCREW, Hex .312-18X1.00, SS	
2	26288	1	HANDLE, Front Hood Access - Black	
3	60268	26	RIVET, .188 DIA.X.126 to .250 SS	
4	15123	1	LATCH, Paddle	
5	13295AF*	1	DOOR WELDMENT	
6	13297AF*	1	CHANNEL, Light Storage	
7	60340	2	WASHER, Flat.312, SS	
8	60784	2	NUT, .312-18 Nylk	
9	16598	1	HINGE, Door 48.5 In.	
10	50354	6	SEAL, Rubber -Bubble Type (.750), 18"	
11	12605	1	LATCH, Door SS - T Style	

\* AF = Gray  
 AFG = Green  
 AFT = Tan

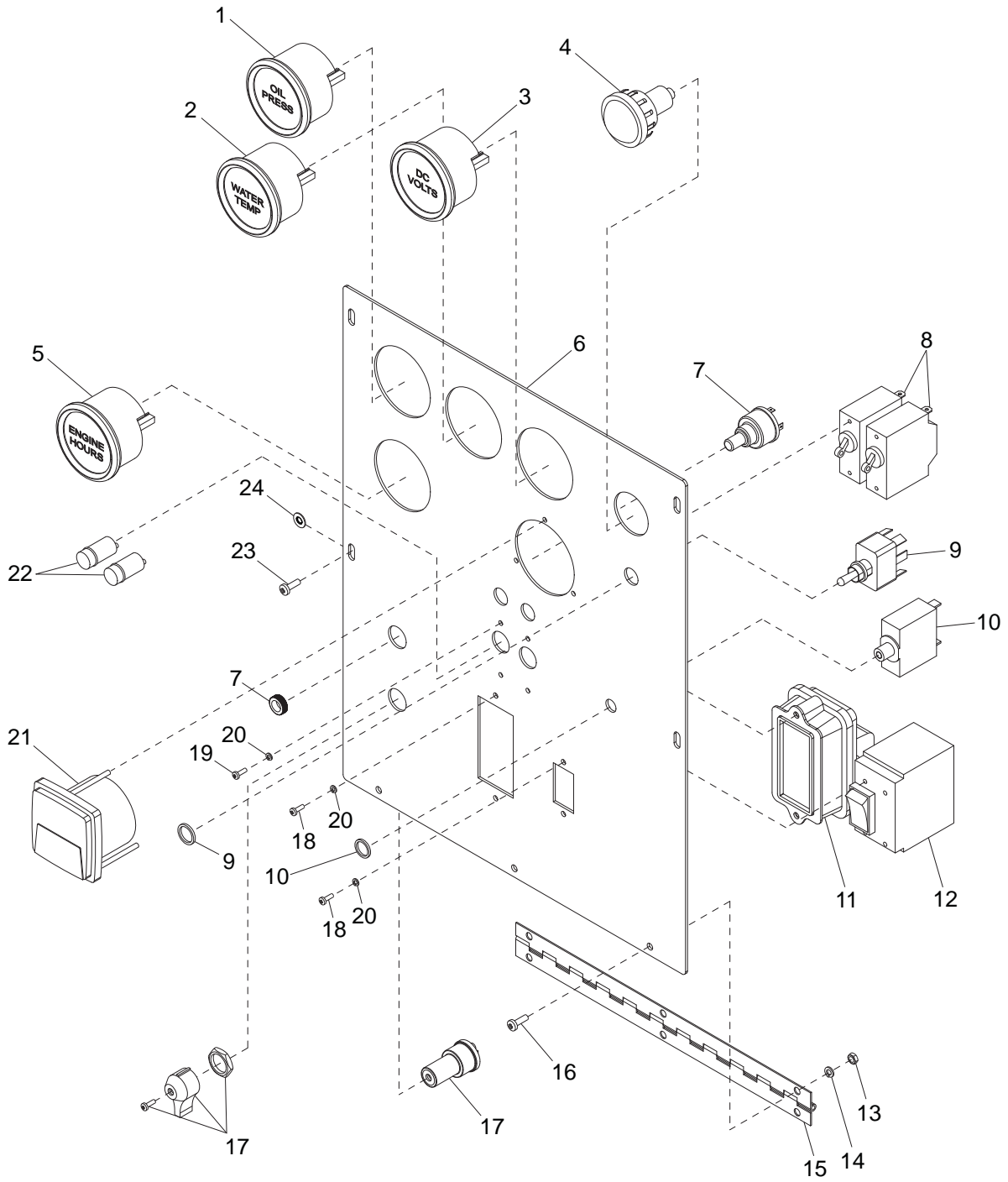
# ROOF PANEL ASSEMBLY



ITEM	PART	QTY	DESCRIPTION	NOTES
1	61169	1	EYEBOLT - 5000LB 1.50 I.D. .75-10 thd	
2	60130	4	RIVET, .156 dia X .126 to.250 grip aluminum	
3	15215	4	RUBBER BUMPER	
4	60690	8	SCREW, Hex .375-16X1.000 SS	
5	60703	8	WASHER, Split Lock .375 SS	
6	60698	12	WASHER, Flat .375 SS USS	
7	13274AF*	1	PANEL, Top	
8	13514B	1	ANGLE, Lift - Black	
9	60247	1	WASHER, Flat .750 ZC	
10	60384	1	WASHER, Split Lock .750 ZC	
11	15293	1	NUT, Hex .750-10 Grd 5 ZC	
12	60140	4	NUT, Hex .375-16 Grd 5 ZC	
13	12605	2	LATCH, Door SS - T Style	
14	60268	8	RIVET, .188 DIA.X.126 TO .250 SS	

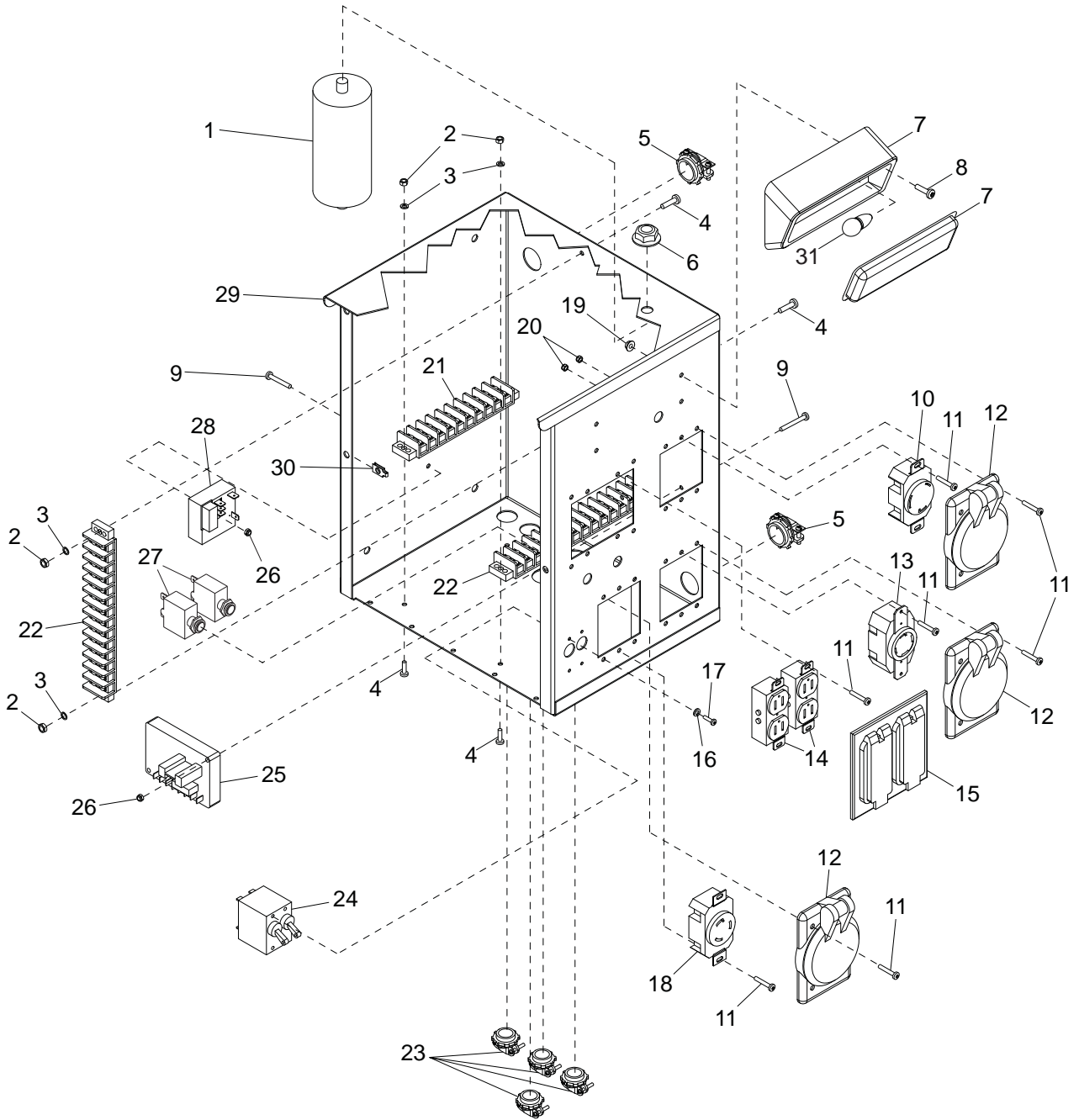
\* AF = Gray  
 AFG = Green  
 AFT = Tan

# CONTROL PANEL ASSEMBLY



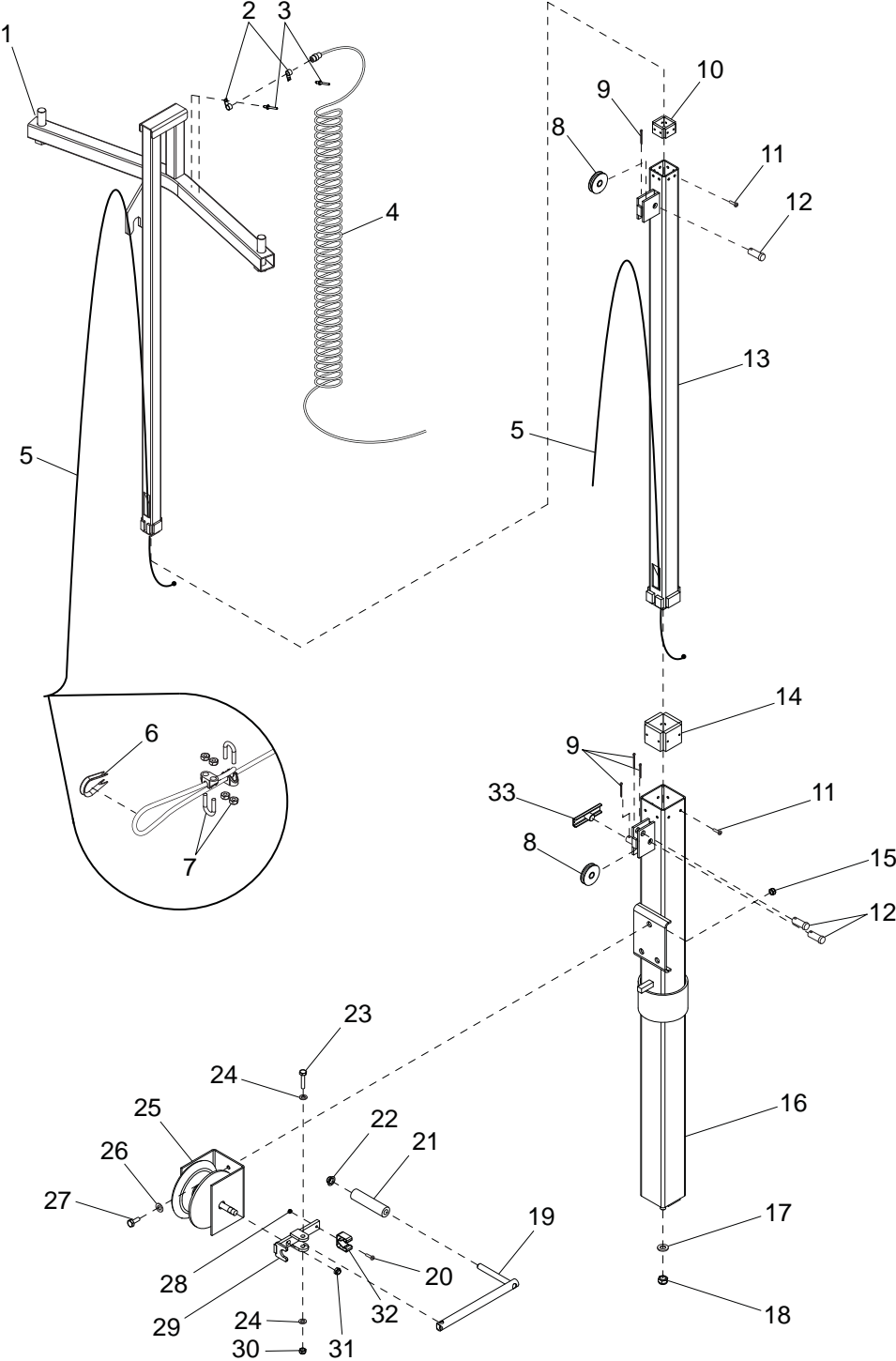
ITEM	PART	QTY	DESCRIPTION	NOTES
1	65628	1	GAUGE, Oil Pressure w/Light	
2	65629	1	GAUGE, Coolant Temperature w/Light	
3	65630	1	GAUGE, Voltmeter - DC w/Light (10-16V)	
4	19207	1	LIGHT ASSEMBLY	
5	15085	1	GAUGE, Hourmeter	
6	13432	1	CONTROL PANEL	
7	11784	1	SWITCH, Push Button Glow Plug	
8	14249	2	BREAKER, 15A 250V 1 Pole	
9	25077	1	SWITCH, Toggle	
10	66020	1	BREAKER, 30A 1 Pole	
11	65886	1	MODULE, GFI Sensing	
12	65887	1	BREAKER, 28A 240V	
13	14231	5	NUT, Hex 10-32 Grd 5	
14	60252	5	WASHER, Lock #10	
15	10081	1	HINGE, Continuous 11"	
16	60277	5	SCREW, Pan 10-32X.500 Phil	
17	11783	1	SWITCH, Ignition, 3 Position	
18	60181	4	SCREW, Pan M3-0.50X5 Phil	
19	60405	4	SCREW, Pan 6-32X.250 Phil	
20	60058	8	WASHER, Lock # 6	
21	11593	1	GAUGE, Voltmeter - AC	
22	65325	2	LIGHT, Indicator Green	
23	61149	4	SCREW, Captive	
24	61151	4	WASHER, Retaining	

# CONTROL BOX ASSEMBLY



ITEM	PART	QTY	DESCRIPTION	NOTES
1	65959	1	CAPACITOR, Dual, Sealed	
2	14231	6	NUT, Hex 10-32 Grd 5	
3	60252	6	WASHER, Split #10	
4	60062	6	SCREW, Pan 10-32X.750 Phil	
5	14219	2	STRAIN RELIEF, .750 Romex	
6	60098	2	NUT, Flange .500-13	
7	66019	1	LIGHT, w/o Switch	
8	60398	4	SCREW, Pan 10-32X.500 Phil SS	
9	60396	3	SCREW, Pan 10-32X1.250 Phil	
10	65487	1	RECEPTACLE, 120V/30A Twist	
11	60046	22	SCREW, Pan 6-32X.750 Phil	
12	65460	3	COVER, Receptacle Weatherproof	
13	65488	1	RECEPTACLE, 240V/30A Twist	
14	65888	2	RECEPTACLE, 120V/20A Duplex	
15	66018	1	COVER, Dual Duplex, Weatherproof	
16	60058	4	WASHER, Lock #6	
17	60405	4	SCREW, Pan 6-32X.250 Phil	
18	15933	1	RECEPTACLE - 240V 20A Twist	
19	61045	4	NUT, Flg 10-32 Grd 5	
20	60728	22	NUT, Nylk 6-32 Grd 5	
21	14203	1	BLOCK, Terminal 10 Pos.	
22	66013	2	BLOCK, Terminal 14 Pos.	
23	14202	4	STRAIN RELIEF, .375 Romex	
24	65852	1	BREAKER, 20A, 250V, 2 Pole	
25	10519	1	Regulator, voltage, SE350	
26	60061	3	NUT, Nylk 10-32 Grd 5	
27	65872	2	BREAKER, 20A,240V, 1 Pole Push Button	
28	14201	1	RELAY, Time Delay 12VDC	
29	13284B	1	BOX, Control	
30	61150	4	NUT, Captive Clip	
31	27597	1	BULB, Light	

# MAST ASSEMBLY

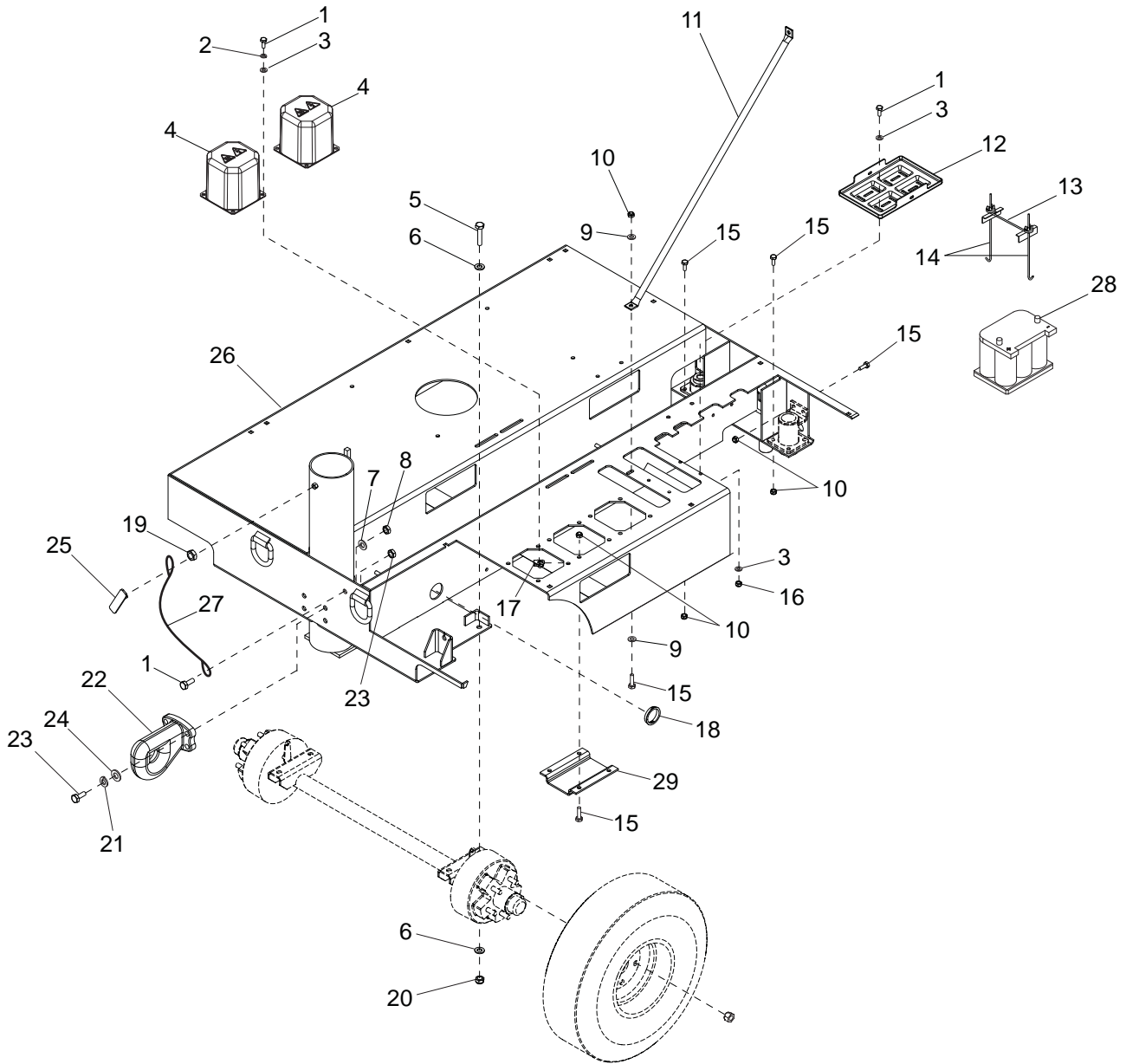




ITEM	PART	QTY	DESCRIPTION	NOTES
1	13454AF*	1	WELDMENT, 1.5" MAST -MLC4064AF	
2	16143	4	CLAMP, Tubing - .500	
3	60268	4	RIVET, .188 DiaX .126	
4	12821	2	COIL CORD -MPL-1000 (Quick Disconnect)	
5	12883	2	CABLE - .125 InX 11 Ft Steel w/ Ball Sedge	
6	15003	1	THIMBLE, Cable	
7	60299	2	CLIP, Wire Rope - .125 Single Saddle	
8	14261	2	PULLEY, groove	
9	15380	4	PIN, Cotter - .125X1.250	
10	13523	4	SHIM, 1.00X1.25X.219	
11	60395	16	SCREW, Pan 10-24X.375 ZC	
12	15015	3	PIN, Clevis - .500 Dia X 1.250 Zp	
13	13453AF*	1	WELDMENT, 2.0 Mast -MLC4064AF	
14	15013	4	SHIM - 2X2X.344 GSM	
15	60358	3	NUT, Nylk .375-16	
16	13452AF*	1	WELDMENT, 3.0" Mast -MLC4064AF	
17	60700	1	WASHER, Flat .500 SS	
18	60681	1	NUT, Hex .500-13 SS	
19	13465ZY	1	WELDMENT, Winch Handle	
20	60540	1	SCREW, Pan 10-24X.750 SS	
21	16666	1	GRIP, Handle - .50 ID 4.00 Long	
22	60491	1	NUT, Push Cap, .50 Nickel Plated	
23	60785	1	SCREW, Hex .312-18X2.00 SS	
24	60697	2	WASHER, Flat .312 SS	
25	12770	1	WINCH, Manual - 600 Lb No Handle	
26	60698	3	WASHER, Flat .375 SS	
27	60295	3	SCREW, Hex .375-16X.75 SS	
28	60457	1	NUT, Nylk 10-24 Grd 5 Zc	
29	13464ZY	1	WELDMENT, Winch Handle	
30	60303	1	NUT, Nylk .312-18 Grd 5 Zc	
31	10571	1	NUT, Winch Handle	
32	19041	1	CLIP, Spring Holder	
33	13403	1	Handle, T - wing nut	

\* AF = Gray  
 AFG = Green  
 AFT = Tan

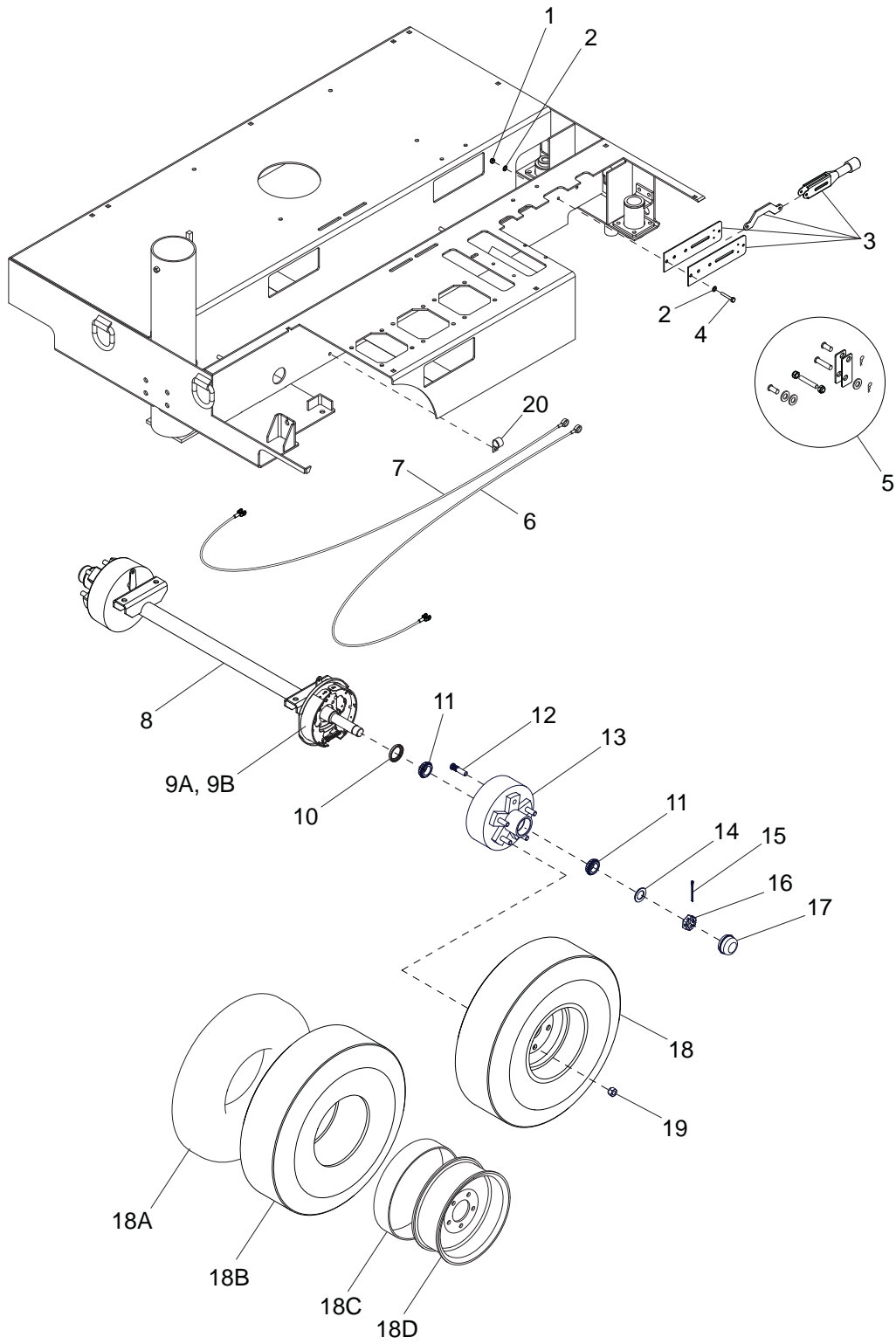
# FRAME ASSEMBLY



ITEM	PART	QTY	DESCRIPTION	NOTES
1	60507	13	SCREW, Hex .312-18X1.0 SS	
2	60701	8	WASHER, Split Lock .312 SS	
3	60340	16	WASHER, Flat .312 SS	
4	13301	2	ASSY, Transformer Can and Base	
5	60663	4	SCREW, Hex .500-13X1.500 SS	
6	60416	8	WASHER, Flat .500	
7	60697	1	WASHER, Flat .312 18-8 SS USS	
8	60784	1	NUT, Nylk .312-18 18-8 SS	
9	60698	2	WASHER, .375 Flat SS	
10	60358	17	NUT, .375-16 Grd5	
11	13604B	1	STRUT, Reinforcing	
12	14145	1	BATTERY Tray	
13	14682	1	BRACKET, Hold Down	
14	60984	2	BOLT, J .250-20X7.00	
15	60690	17	SCREW, Hex .375-16X1.00 SS	
16	60303	4	NUT, Nylk .312-18 Grd 5	
17	61143	8	NUT, Uclip .250-20 Grd 5, Short Type	
18	18495	2	FITTING, Bushing 2.00DX1.625ID	
19	62079	1	NUT, Nylk .312-18 Jam ZC	
20	60307	4	NUT, Nylk .500-13 Grd 5	
21	60702	4	WASHER, Split Lock .500 SS	
22	13304	1	PINTLE Hook - 1.875 Dia Lunette 20 Ton	
23	60333	4	NUT, Jam .500-13 Grd 5	
24	60699	4	WASHER, Flat .500 SS	
25	11649Z	1	WELDMENT, T-Bolt	
26	13427AF*	1	WELDMENT, Chassis - MLT 4064	
27	13926	1	TETHER, Cable - 14.5 Inches	
28	65358	1	BATTERY, 12V GRP75/25 720CCA Gel	
29	17684B	1	BRACKET, Wire Guard	

\* AF = Gray  
 AFG = Green  
 AFT = Tan

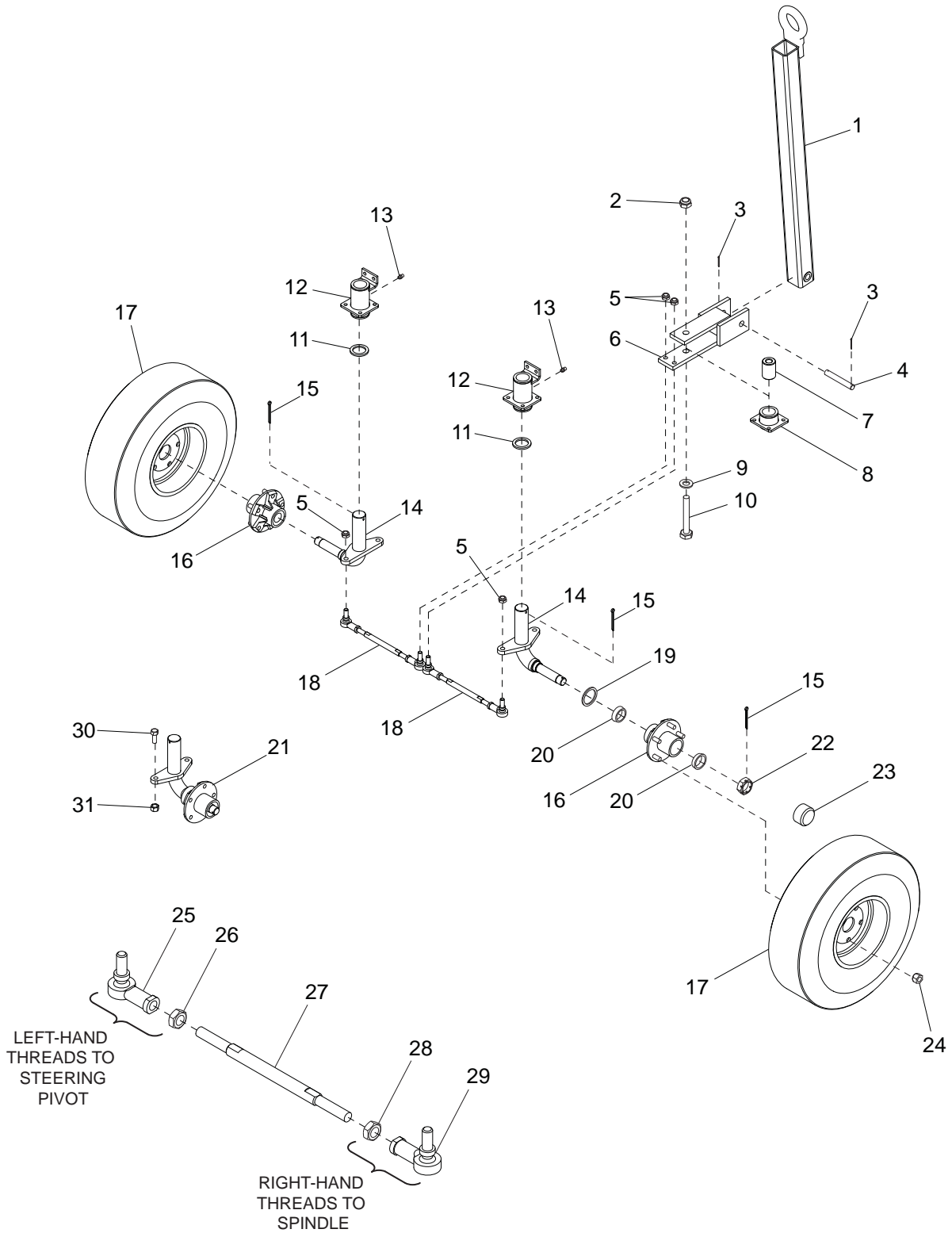
# REAR AXLE ASSEMBLY



ITEM	PART	QTY	DESCRIPTION	NOTES
1	60303	2	NUT, Nylk .312-18 Grd 5	
2	60416	4	WASHER, .500 Flat 1.375/.090 zc	
3	12239	1	HANDLE, Brake	
4	60785	2	SCREW, Hex .312-18X2.00	
5	12240	1	KIT, Brake Handle Hardware	
6	12242	1	BRAKE Cable - 72 In	
7	12241	1	BRAKE Cable - 84 In	
8	40035	1	AXLE, Rear - MLC4064AF (Complete)	
9A	40043	1	BRAKE Assy, 7" Right Hand	
9B	40044	1	BRAKE Assy, 7" Left Hand	
10	40045	2	SEAL, DL220	
11	40053	4	BEARING, L68149	
12	60674	10	STUD, ST-500 1/2-20 Screw In	
13	40060	2	HUB/DRUM With Races HD-DX7-5, 7"	
14	40061	2	O-WASHER, 1" Spindle	
15	40062	2	PIN, Cotter .125X1.75	
16	40063	2	NUT, 1.25 Slotted	
17	40064	2	CAP, Grease 21-3	
18	13357AF*	2	WHEEL 6.90/6.00-9 6 Ply 9X4 Split	
18A	13978	2	TUBE, Inner TR135, for 690X9 tire	
18B	13976	2	TIRE, 690-9 K364 6 Ply	
18C	13977	2	Flap, 690/600-9	
18D	13520AF*	2	RIM, 9X4 Split - 5-4.5 B.C.	
19	60096	10	NUT, .500-20 Lug Grd5 MLT Wheel	
20	60649	2	CLAMP, Tubing - .750 Heavy Duty	

\* AF = Gray  
 AFG = Green  
 AFT = Tan

# FRONT SPINDLE ASSEMBLY

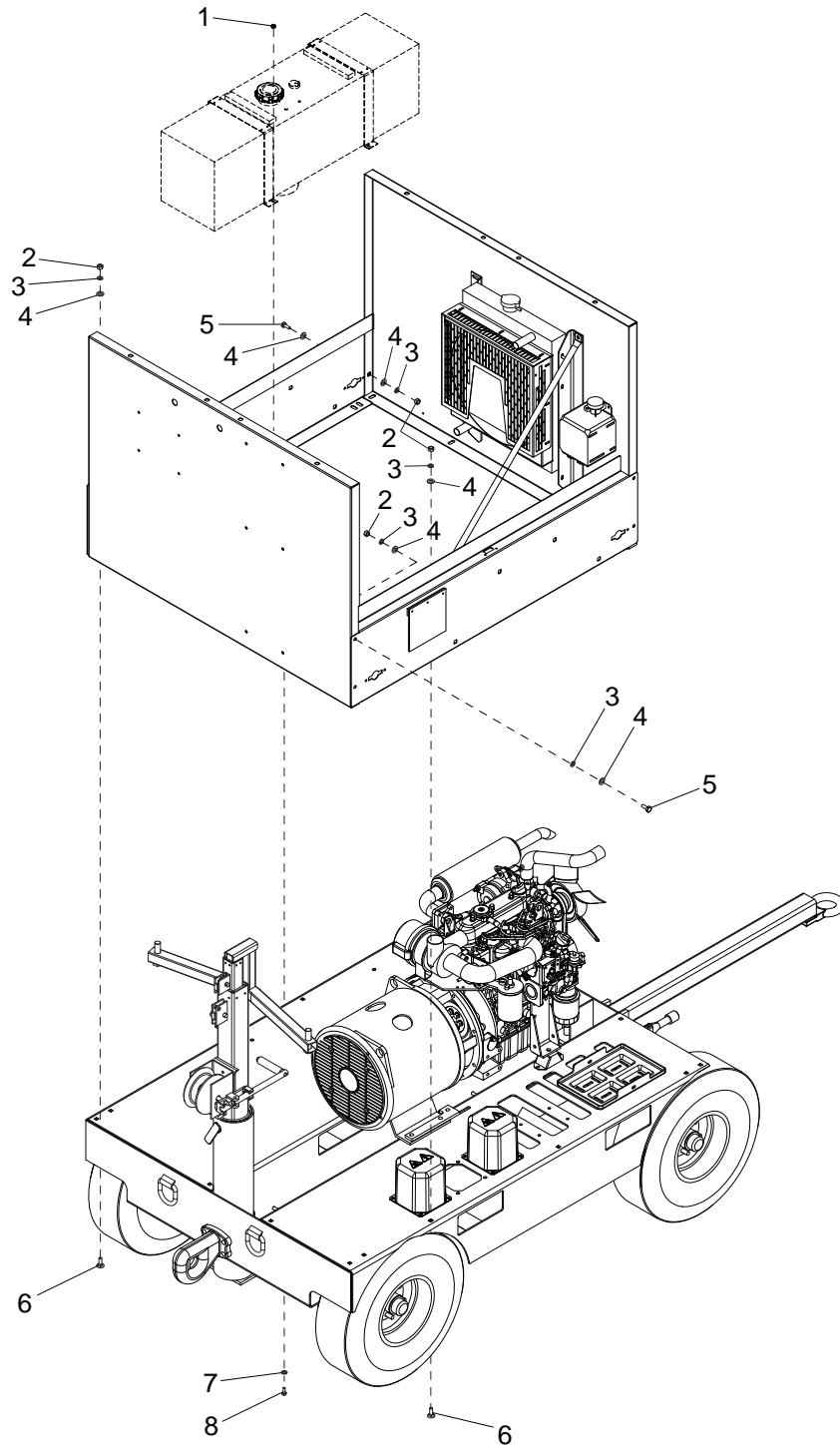


ITEM	PART	QTY	DESCRIPTION	NOTES
1	13484AF*	1	WELDMENT, Tongue	
2	60308	1	NUT, Nylk .750-10 18-8 SS	
3	15380	2	PIN, Cotter .125X1.25	
4	13584Z	1	PIN, Tongue Pivot	
5	60643	4	NUT, Nylk .500-20 Grd 5	
6	13430AF*	1	WELDMENT, Tongue Base	
7	13509Z	1	SPACER, Steering Box	
8	13460AF*	1	ASSY, BEARING TOWER - Steering Pivot	
9	60527	1	WASHER, Flat .750 Hardened	
10	62004	1	SCREW, Hex .750-10X4.5 SS	
11	61166	2	WASHER, Flat 1.625 Hardened	
12	13429AF*	2	ASSY, SPINDLE/HUB/BEARING	
13	60093	2	GREASE Zirk Straight .125 Npt	
14	13364AF*	2	WELDMENT, Spindle	
15	61176	4	PIN, Cotter .188X2.5	
16	13420	2	HUB - 5 Stud	
17	13357AF*	2	WHEEL, 6.90/6.00-9 6Ply - 9X4 Split Rim 5-4.5BC	
18	13625	2	ASSY, Tie-Rod - MLC4064AF	
19	13588	2	GNK, Bearing Seal	
20	13589	4	GNK, Bearing	
21	13419	2	ASSY, SPINDLE/HUB, Steering	
22	13591	2	GNK, Nut	
23	13592	2	GNK, Grease Cap	
24	60096	10	NUT, Lug .500-20 Grd 5 MLT	
25	17500	2	BALL Joint - .50-20 LH	
26	60450	2	NUT, Left Hex .500-20 Grd 5	
27	13431Z	2	TIE-Rod	
28	60449	2	NUT, Hex .500-20 Grd 5	
29	17499	2	BALL Joint -.50-20RH	
30	60690	4	SCREW, Hex .375-16X1.00 SS	
31	60358	4	NUT, Nylk .375-16 Grd 5	

\* AF = Gray  
 AFG = Green  
 AFT = Tan

\* See REAR AXLE ASSEMBLY for further breakdown of wheel parts.

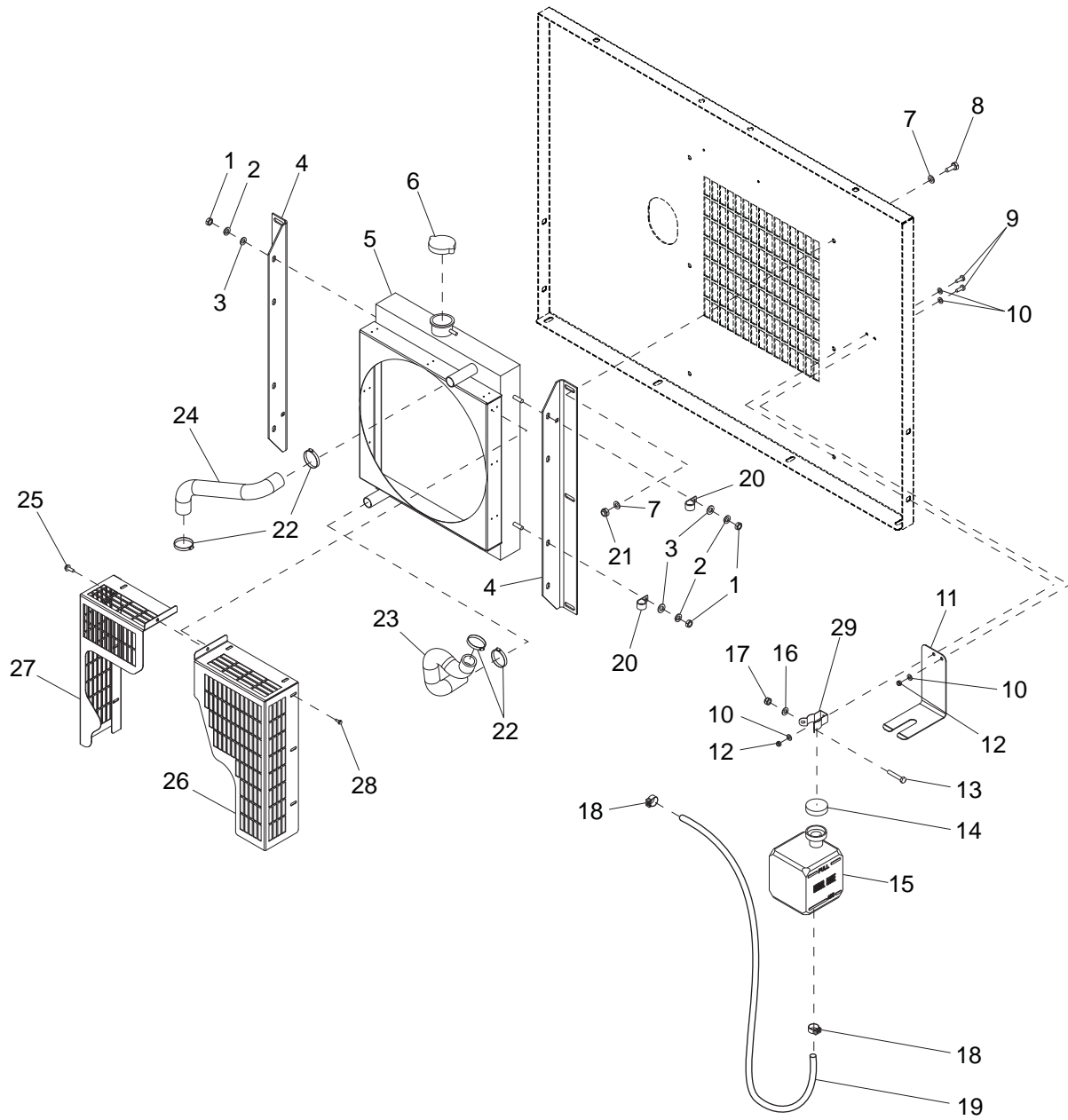
# CHASSIS ASSEMBLY





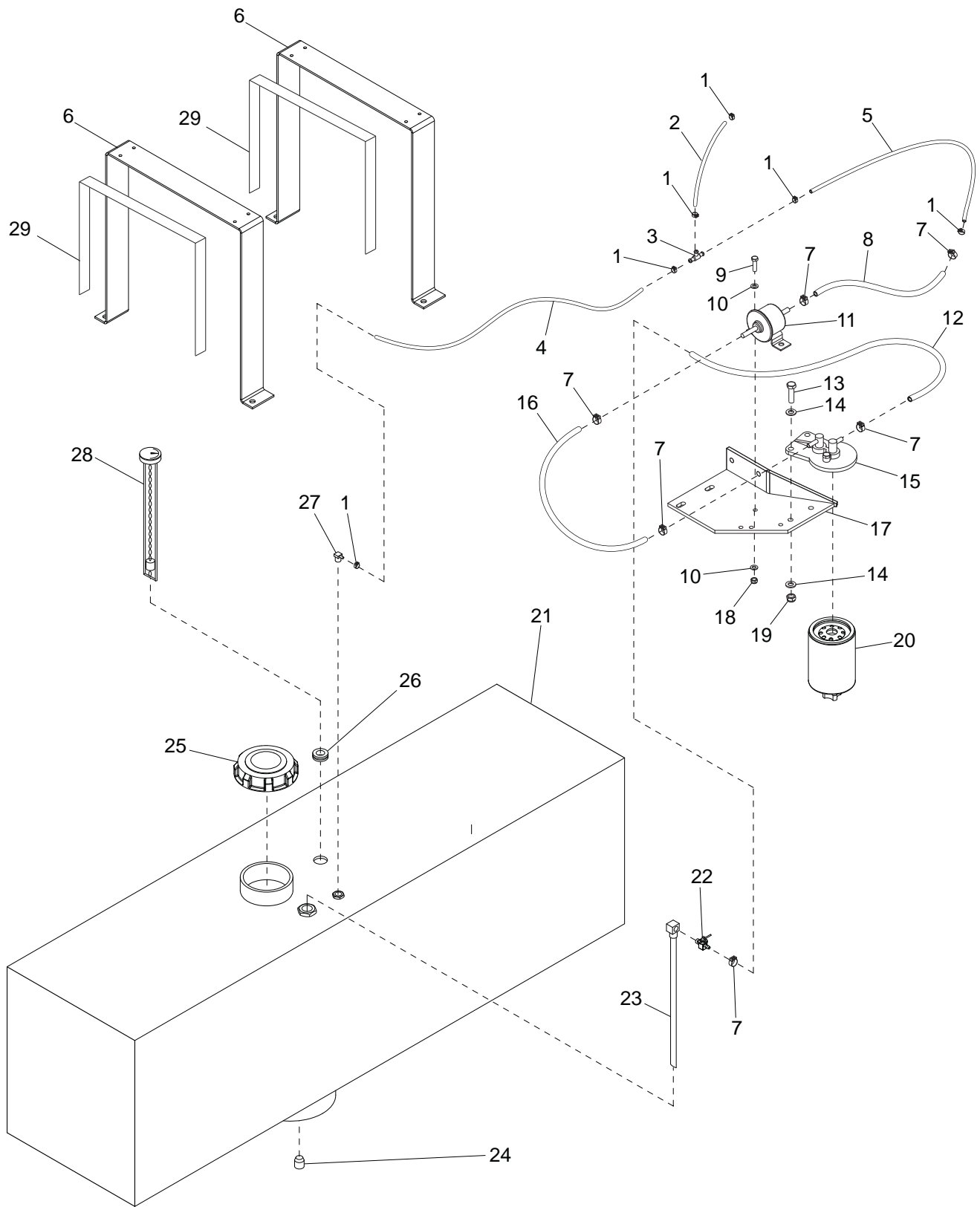
<b>ITEM</b>	<b>PART</b>	<b>QTY</b>	<b>DESCRIPTION</b>	<b>NOTES</b>
1	60603	4	NUT, Nylk .312-18 Grd 5 ZC	
2	60140	14	NUT, Hex .375-16 Grd 5 ZC	
3	60703	22	WASHER, Split Lock .375 SS	
4	60698	22	WASHER, Flat .375 SS USS	
5	60690	8	SCREW, Hex .375-16X1.00 SS	
6	60790	14	SCREW, Carr Sqr .375-16X1.00 SS	
7	60340	4	WASHER, Flat .312 SS	
8	60507	4	SCREW, Hex .312-18X1.00 SS	

# COOLING SYSTEM ASSEMBLY



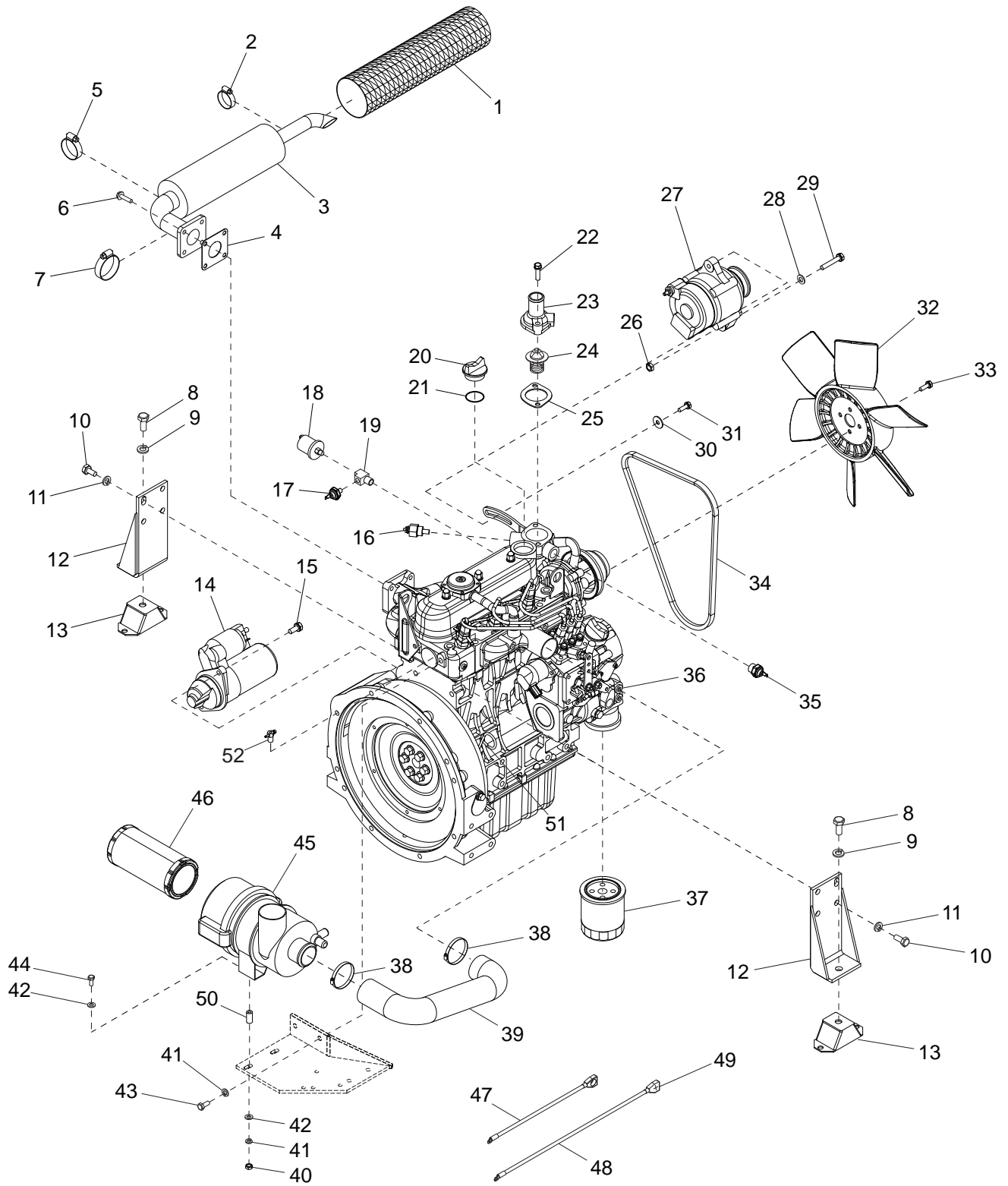
ITEM	PART	QTY	DESCRIPTION	NOTES
1	60032	4	NUT, Hex M8-1.25 Grd 8	
2	60271	4	WASHER, Lock .312	
3	60340	4	WASHER, Flat .312, SS	
4	11683B	2	BRACKET, Radiator	
5	11768	1	RADIATOR, w/Shroud	
6	19219	1	CAP, Radiator, Small 14Lbs	
7	60698	12	WASHER, Flat.375, SS	
8	60554	6	SCREW, .375 16X1.00 SS	
9	60529	2	SCREW, 10-32X.500 Pan Phil18-8 SS	
10	60067	4	WASHER, Flat #10 SS	
11	22419B	1	BRACKET, Support	
12	60530	2	NUT, Nylk 10-24 SS	
13	60518	1	SCREW, .250X20X1.50 Hex G5	
14	19714	1	CAP, Overflow Bottle	
15	20287	1	BOTTLE Overflow 2 QT	
16	60696	1	WASHER, Flat .250 SS	
17	60144	1	NUT, Nylk .250-20	
18	14216	2	CLAMP, Hose SAE 004	
19	50018	1	HOSE .312, 36 Inches	
20	15627	2	CLAMP, Tube .625 Heavy Duty	
21	60792	6	NUT, Nylk .375-16 SS	
22	60316	4	CLAMP, Hose SAE 1.56-2.50	
23	12350	1	HOSE, Lower Radiator	
24	16687	1	HOSE, Upper Radiator	
25	60364	1	SCREW, Hex 10-16X.500 Self Tap	
26	13351B	1	GUARD, Fan RH Kubota	
27	13352B	1	GUARD, Fan LH Kubota	
28	60175	9	SCREW, Hex .250X20X.500 Grd 5	
29	19726	1	CLAMP, Overflow Bottle	

# FUEL TANK AND FILTER ASSEMBLY



ITEM	PART	QTY	DESCRIPTION	NOTES
1	60778	6	CLAMP, Hose .188 Crimp Style	
2	16871	1	HOSE, Fuel .188 ID, 3 IN	
3	17145	1	FITTING, T-.188x.188x.188 Nylon	
4	14211	1	HOSE, Fuel .188 ID, 30 IN	
5	16870	1	HOSE, Fuel .188 ID, 13 IN	
6	13408B	2	BRACKET, Fuel Tank	
7	60777	6	CLAMP, Hose .312 Crimp Style	
8	16869	1	HOSE, Fuel .312 ID, 10 IN	
9	60393	2	SCREW, .250-20X1.000 Std Hex	
10	60696	4	WASHER, Flat .250 SS	
11	13278	1	PUMP, Fuel Electric	
12	50018	1	HOSE, Fuel .312 ID, 27 IN	
13	60851	2	SCREW, Hex .312-18X1.25SS	
14	60340	4	WASHER, Flat SS .312	
15	13580	1	FILTER HEAD, Fuel	
16	16232	1	HOSE, Fuel .312 ID 13 IN	
17	13483B	1	WELDMENT, Filter Bracket	
18	60144	2	NUT, Nylk .250-20 Grd 5	
19	60303	2	NUT, .312-18 Nylock G2 ZC	
20	13517	1	ELEMENT, Fuel Filter - Water Separator	
21	13316	1	ASSY, Fuel Tank	
22	15397	1	VALVE, .25NPTX.312 Hose Barb	
23	13500	1	FUEL PICK-UP TUBE 13 IN	
24	60776	1	FITTING, Plug .250NPT Flush	
25	12137	1	CAP, 3.5 Inch Fuel Tank w/Lanyard	
26	13578	1	GROMMET, Rubber	
27	16271	1	FITTING, 90-.250X.250NPT X .188 Barb	
28	13577	1	GAUGE, Mechanical Fuel	
29	50187	2	SEAL, Door D-Shaped (.750, 3 ft.)	

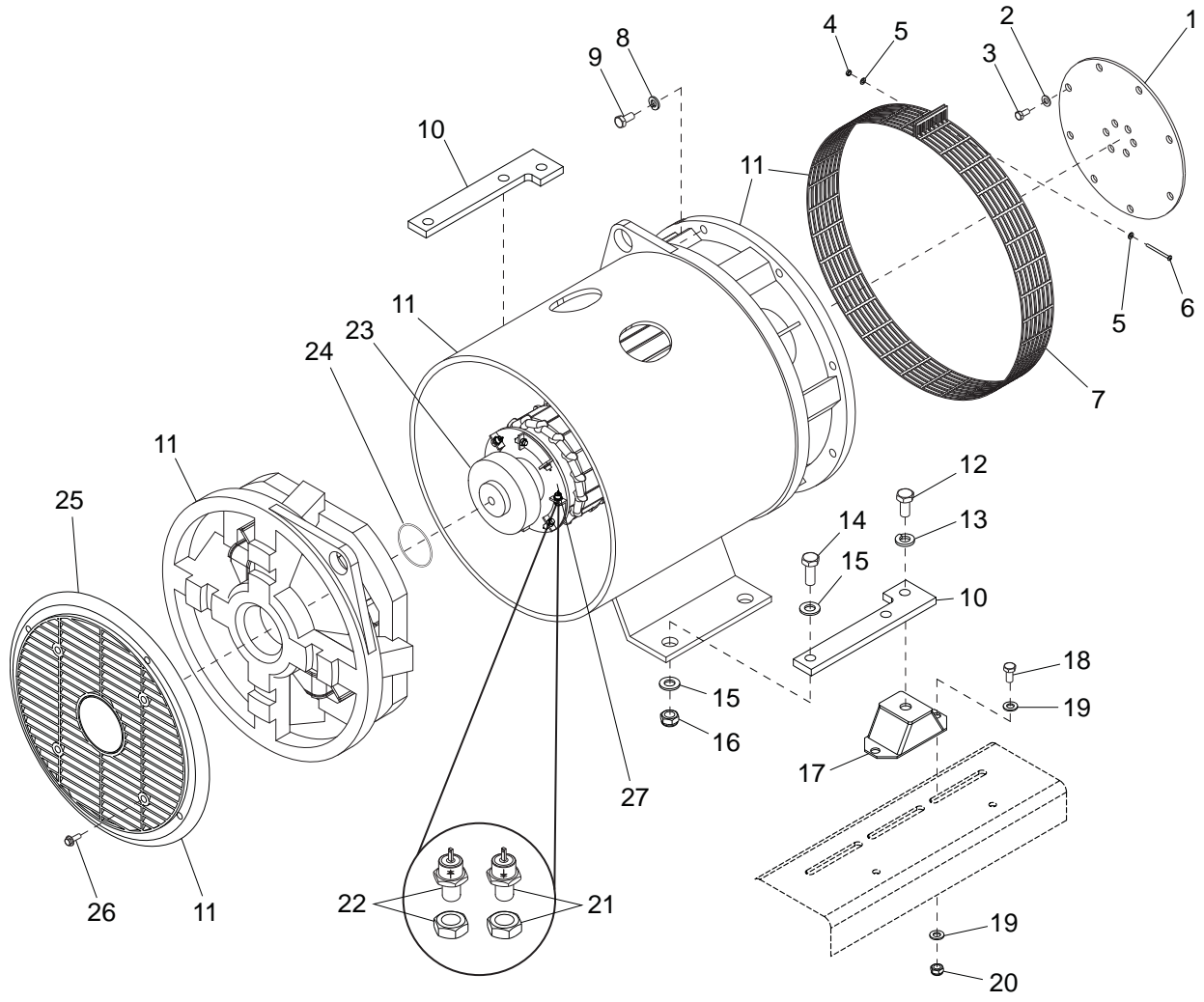
# ENGINE ASSEMBLY



ITEM	PART	QTY	DESCRIPTION	NOTES
1	26480	1	SLEEVE, High Temperature 4"x30"	
2	19338	1	CLAMP, Hose SAE 016 (.68-1.50)	
3	15021	1	MUFFLER, Kubota	
4	11042	1	GASKET, Exhaust	
5	15422	1	CLAMP, Hose SAE 020 (.75-1.75)	
6	60238	4	SCREW, Hex M8-1.25x40 Sflg Grd 8.8 ZC	
7	60316	1	CLAMP, Hose SAE 032 (1.56-2.50)	
8	60275	2	SCREW, Hex .500-13x1.00 Grd 5 ZC	
9	60702	2	WASHER, Split Lock .500 SS	
10	60494	8	SCREW, M10-1.50X30 Hex G8.8 ZC	
11	60026	8	WASHER, Split Lock M10 ZC	
12	12338B	2	WELDMENT, Engine Mount, Kubota	
13	15241	2	COMPRESSION MOUNT, Engine/Generator	
14	10773	1	STARTER, Kubota	
15	10756	2	BOLT, Starter	
16	12873	1	SENDER, Coolant Temp - .375NPT (Kubota)	
17	15375	1	SWITCH, Oil Pressure - Kubota	
18	18106	1	SENDER, Oil Pressure	
19	60735	1	FITTING, Tee Strt -.125NPT BRS	
20	10757	1	CAP, Oil Filler - Kubota	
21	10758	1	O-RING, Oil Filler Cap - Kubota	
22	10759	2	BOLT, Thermostat	
23	10760	1	COVER, Thermostat	
24	12488	1	THERMOSTAT ASSY - Kubota	
25	12489	1	GASKET, Thermostat - Kubota	
26	10761	1	NUT	
27	12486	1	ALTERNATOR - Kubota	
28	10762	1	WASHER, Plain	
29	10763	1	BOLT	
30	10764	1	WASHER, Alternator	
31	10765	1	BOLT	
32	15495	1	FAN, Pusher - Kubota	
33	10766	4	BOLT, Flange	
34	11628	1	V-BELT - Kubota	
35	14099	1	SWITCH, Coolant Temperature - Kubota	
36	13310	1	ENGINE, Kubota D1005-E3BG1-MGM-1	
37	10775	1	OIL FILTER - Kubota	
38	60316	1	CLAMP, Hose - SAE 032 (1.56-2.50)	
39	16589	1	HOSE, Air cleaner	
40	60285	2	NUT, Hex .312-18 Grd 5 ZC	
41	60029	2	WASHER, Split Lock, M8 ZC	
42	60243	4	WASHER, Flat .250 ZC	
43	61082	2	SCREW, Hex M8-1.25X20 Grd 8.8 ZC	
44	61061	2	SCREW, Hex .312-18X.875 Grd 5 ZC	
45	16443	1	AIR FILTER ASSY - Kubota	
46	16444	1	AIR CLEANER ELEMENT - Kubota	
47	15073	1	CABLE, Battery - 24" 4GA Blk 7/16" Lug	
48	15074	1	CABLE, Battery - 38" 4GA Red 7/16" Lug	
49	10353	1	BOOT, Battery - Red, 2 GA Top Post	
50	41235B	2	SPACER - .75 OD X .375 ID X 1.00 Long	
51	12483	1	OIL DIPSTICK - Kubota	
52	13526	1	JOINT EYE, double port, Kubota	

**Note:** Engine and generator parts used in all Magnum Products LLC equipment carry the Original Equipment Manufacturer (OEM) warranty unless otherwise stated. OEM warranty parts must be purchased through an OEM dealer. Please contact Magnum Products LLC with questions.

# GENERATOR ASSEMBLY





ITEM	PART	QTY	DESCRIPTION	NOTES
1	16123	1	PLATE, Drive SAE 6.5	
2	60119	8	WASHER, Flat .312	
3	60168	8	SCREW, Hex .312-18 x .750	
4	60284	1	NUT, Hex .250-20 Grd 5	
5	60243	2	WASHER, Flat .250	
6	60143	1	SCREW, Phil .250-20 x2.00	
7	13618	1	MARATHON Fan Guard Screen	
8	60206	8	WASHER, Lock .375	
9	60352	8	SCREW, Hex .500-13x1.00 Grd 5	
10	11975B	2	PLATE, Generator Adapter	
11	13280	1	GENERATOR	
12	60275	2	SCREW, Hex .375-16 x 1.25	
13	60702	2	WASHER, Lock .500 SS	
14	60683	2	SCREW, Hex .50-13 x 1.5 SS	
15	60699	4	WASHER, Flat .500 SS	
16	60680	2	NUT, .500-13 Nylk SS	
17	15241	2	COMPRESSION, Mount	
18	60690	4	SCREW, Hex .375-16 x 1.00 SS	
19	60698	8	WASHER, Flat .375 SS	
20	60140	4	NUT, Hex .375-16 Grd 5	
21	13621	3	MARATHON Diode Forward	
22	10767	3	MARATHON Diode Reverse	
23	10768	1	MARATHON Bearing	
24	11337	1	GENERATOR O-Ring-Marathon	
25	13620	1	MARATHON Intake Cover	
26	10769	4	SCREW, M6-1.00X8 Phil Grd 8	
27	19675	1	RECTIFIER, Generator (280 Frame)	

**Note:** Engine and generator parts used in all Magnum Products LLC equipment carry the Original Equipment Manufacturer (OEM) warranty unless otherwise stated. OEM warranty parts must be purchased through an OEM dealer. Please contact Magnum Products LLC with questions.



# SERVICE LOG

OIL GRADE: \_\_\_\_\_ BRAND: \_\_\_\_\_

COOLANT MIXTURE: \_\_\_\_\_ BRAND: \_\_\_\_\_

---



---



---



---



---



---



---



---



---



---



---

Date	Hours to service	Oil level	Coolant level

Date	Hours to service	Oil level	Coolant level

REV: ORG  
PART NO: 13421  
01.13.11